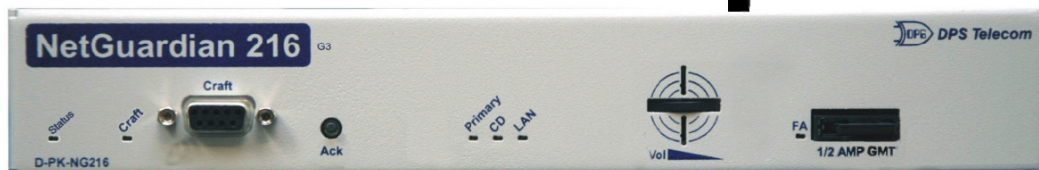


NetGuardian 216 G3 Wireless

Featuring Web Browser 2.0 and SMS Options



The NetGuardian 216 G3 provides advanced network reliability management with GSM/CDMA SMS alarm reporting both direct to cellular phones and DPS Management Platforms.

Benefits of the NetGuardian 216 G3

- **Cost-effective way to monitor your small but critical sites**
- **Reports alarms via GSM/CDMA network or LAN connection**
- **Works with SMS Receiver to forward SMS Notifications as SNMP Traps**
- **Sends 24/7 SMS or email alarm notifications to up to 8 users.**
- ***New web browser interface* for easy remote monitoring and configuration**
- **Supports dialup paging**
- **Built with 2 or 8 analog inputs**
- **Event Log records the last 100 events, accessible via web interface or TTY**
- **16 discrete alarm inputs and 2 control relay outputs**
- **Supports SNMPv1 and v2c**
- **Audible alarm alerts with volume control and cut off switch**
- **30-DAY NO-RISK MONEY-BACK GUARANTEE**

Overview

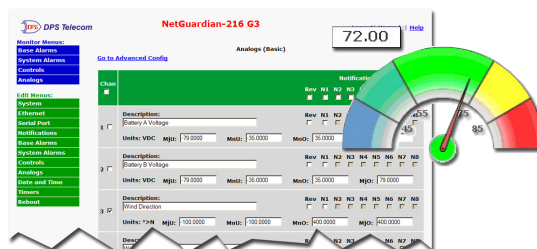
The NetGuardian 216 G3 offers an easy, cost-effective way to monitor your small sites over either LAN or CDMA/GSM modem. The unit's wireless modem provides flexibility allowing you to report alarms from sites without LAN access or to provide an alternate monitoring path should LAN fail.

The NetGuardian 216 G3 comes with 16 discrete alarm inputs, 2 or 8 analog inputs, and 2 control relay outputs, and the NetGuardian can send up to 8 notifications for each alarm or control operation.

The NetGuardian 216 can also send cellular SMS notifications for alarm or control events as well. You can send SMS alarm alerts directly to your mobile phone or, with the SMS Receiver accessory, forward SMS notifications as SNMP traps to your T/Mon or SNMP master station. This allows you to report alarms over your cellular network without having to pay your carrier or a third party provider for a static IP address or open a hole in your firewall to receive alarms from your cellular RTUs.

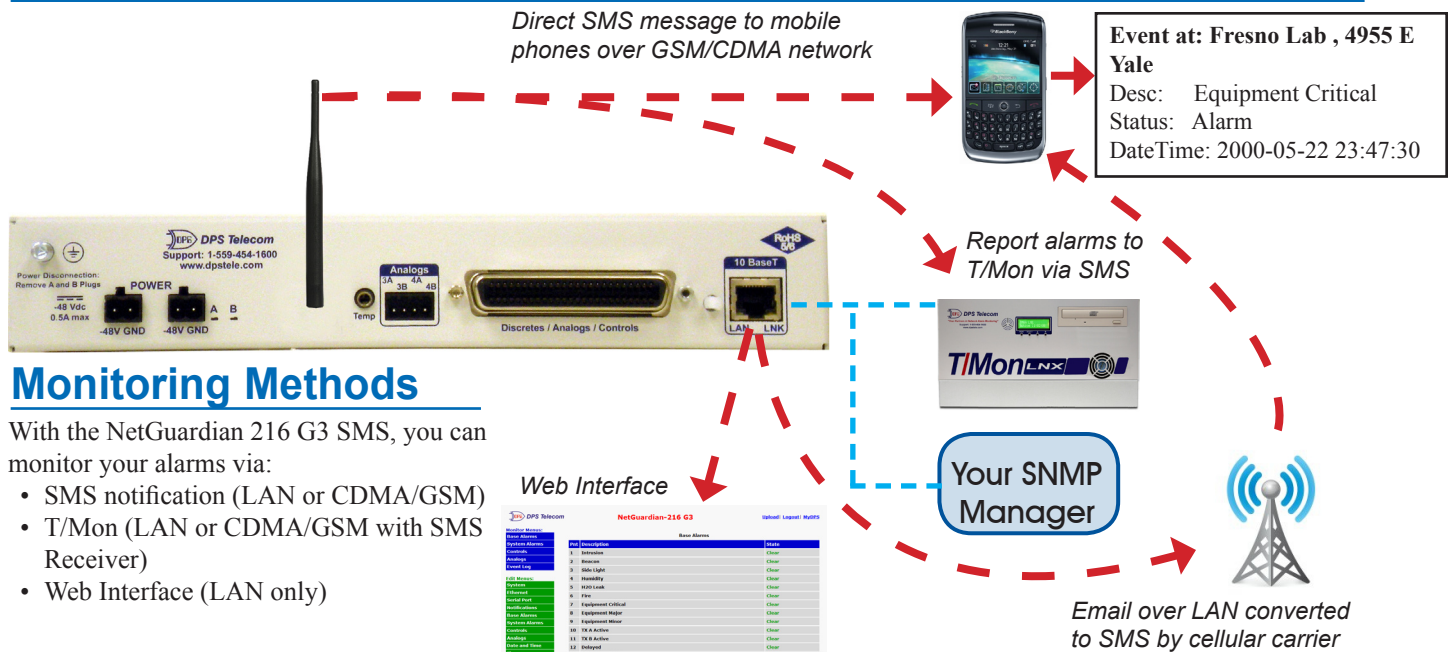
You can also monitor your alarms over LAN via the unit's redesigned web interface, which makes alarm monitoring as easy as opening a web browser.

The NetGuardian 216 G3 reports alarms via SNMP, DCP, DCPf, or DCPx over either UDP or TCP and can be used with your DPS master station or an SNMP manager.



New Web Browser interface for convenient remote monitoring and configuration - Now with analog gauges!

Back Panel View



Monitoring Methods

With the NetGuardian 216 G3 SMS, you can monitor your alarms via:

- SMS notification (LAN or CDMA/GSM)
- T/Mon (LAN or CDMA/GSM with SMS Receiver)
- Web Interface (LAN only)

Specifications

Discrete Point Inputs:	16 (reversible)
Analog Inputs:	2 general purpose OR 8 total analogs (battery A&B, internal & external temperature, 4 general purpose)
Analog Thresholds:	4 per analog
Analog Input Range:	-90 to 90 VDC or 4-20 mA
Analog Sensors:	2 optional - 1 internal/ 1 external (temp and voltage monitoring)
Control Outputs:	2
Maximum Voltage:	60 VDC/120 VAC
Maximum Current:	1/2 Amp DC
Interfaces:	One 50-pin connector 1 RJ45 Ethernet jack 1 4-pin connector 1 DB9 craft port
Wireless Capability:	Either GSM or CDMA

Configuration:	Via Web Browser (via LAN only) or TTY interface
Dimensions:	1.720" H x 10.489" W x 6.636"D
Mounting:	19" or 23" rack or wall mount
Protocols:	SNMPv1 and v2c, DCP, DCPF, DCPX
Visual Display:	11 LEDs
Audible Interface:	Speaker with volume control and cut-off switch
Power Input Options:	-48 VDC (-40 to -70 VDC) single or dual power input; +/-24VDC input; optional 24 VDC from 110 VAC wall transformer
Current draw:	50 mA
Fuse:	1/2 Amp GMT
Operating Temp.	32° to 140°F (0° to 60°C)
Operating Humidity:	0% to 95% non-condensing

Optional Accessories

Wire-Wrap Back Panel

The wire-wrap back panel offers alternate connectivity options for discrete alarms, analog alarms, and control relays.

D-PA-00242-10B



External Temperature Sensor

With a 10-ft lead, the external digital temperature sensor allows placement at a specifically targeted critical zone.

D-PR-984-10A-10



Most NetGuardian 216 G3 builds are CE certified. (Meeting EN60950-1:2001 standards)
The builds not evaluated for compliance are those with +12 VDC power input and a 202 modem.

Call 1-800-622-3314 for Pricing

Visit our website at www.dpstele.com

4955 East Yale Avenue, Fresno, California 93727 • 800-622-3314 • Fax 559-454-1688