



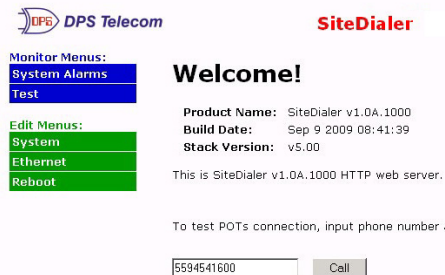
# The DPS Site Dialer G3 for T/Mon D-PK-SDXMV



## Overview:

When combined with the T/Mon LNX, the DPS Site Dialer delivers another critical method of receiving alarm notifications. This application allows you to receive these voice alerts for the alarm points databased in the T/Mon LNX. You can select exactly which alarm points you want to receive voice notifications for, and the Site Dialer calls your home or cell phone. Get the important notifications you need, no matter where you are.

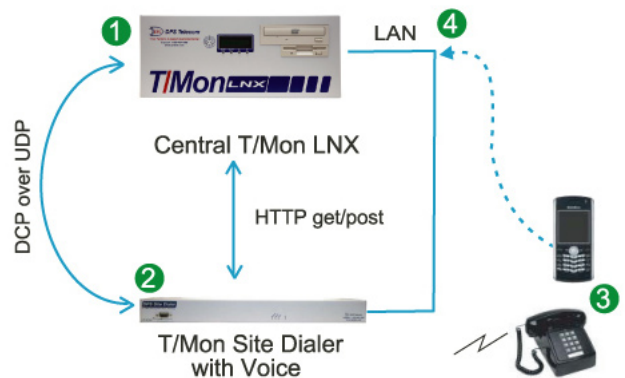
The Site Dialer itself is easy to install and requires virtually no configuration. After physically setting up the unit (mounting, power, and giving it an IP address), you're ready for the configuration on the T/Mon LNX.



*When configuration is complete, you'll confirm your settings via the web by forcing a test call.*

## How it works:

1. Notifies users via T/Mon paging queue by controlling Site Dialer via DCP and creates voice message and sends it to the Site Dialer via HTTP post
2. Dials your home phone or cell and plays voice message
3. User hears message and acknowledges it via DTMF input
4. User's initials are recorded to master's history and alarm escalation stops



## Back Panel:



## Benefits:

- Verbally announce incoming alarm messages via telephone line
- Dials your home or cell phone with alarm messages already databased in T/Mon
- Ack alarms from anywhere in the field using your home or cell
- Assign voice notifications to a few specific alarm points, a range of points, or an entire site
- User options include acknowledging, silencing, or ignoring alarm via DTMF
- Includes built-in web browser for confirming config settings
- Firmware downloadable via LAN



*\*For the T/Mon Site Dialer for SLIM or MINI, use Part Number D-PK-SDXMV-12003*

## Specifications:

**Dimensions:** 1 RU - 1.72" H x 17.0" W x 6.64" D

**Weight:** 2.6 lbs

**Mounting:** 19" or 23" rack or wall mount

**Power Input:** -48VDC

**Fuse:** Dual 1/2 Amp GMT Fuses

**Interfaces:** 1 RJ45 10BaseT Ethernet port,  
1 DB9 front-panel craft port,  
1 RJ-11 Telco jack

**LEDs:** 5 Front panel, 5 back panel

**Op. Temp:** 32°–140° F (0°–60° C)

**Op. Humidity:** 0%–95% non-condensing

**Firmware:** Downloadable via LAN

**Web Browser:** Yes

**RoHS:** 5 of 6

**Requirements:** T/Mon LNX, Voice Dialing  
Module (D-SW-VOICE-  
12001.00001)



**Sales: (800) 622-3314 Support: (559) 454-1600**

**www.dpstele.com**