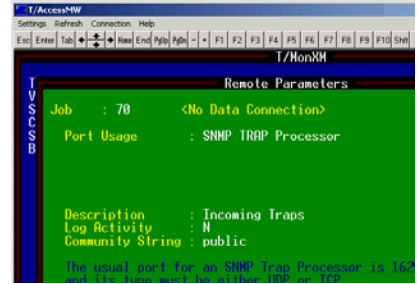


**Problem: Unable to Setup an SNMP Trap Processor Job
Platform: T/Mon – IAM**

Configuring your T/Mon – IAM to receive and process SNMP traps can enhance your monitoring considerably. The SNMP setup process requires the setup of an SNMP trap processor job on the T/Mon. Use the following "techno knowledge" paper to setup an SNMP trap processor job on the T/Mon – IAM for the first time, or to troubleshoot common issues.



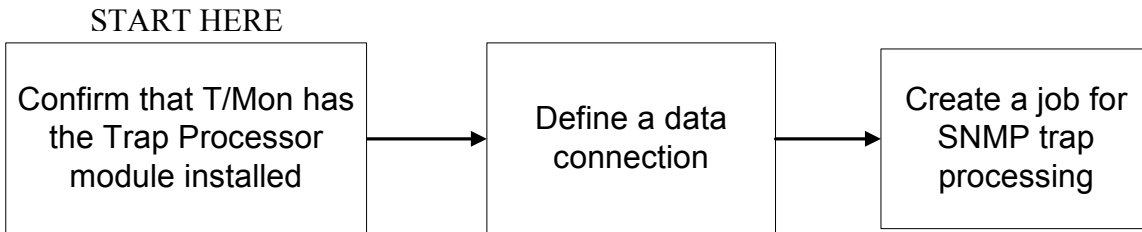
This "techno knowledge" paper can help you if:

- You are unable to setup an SNMP trap processor job

NOTE: In order to receive and process traps, the SNMP Trap Processor module (DPS Part # D-SK-490-10A-00) must be loaded on the T/Mon

Quick Reference Chart

(for more details, review the troubleshooting checklist, starting on page 2 of this guide)

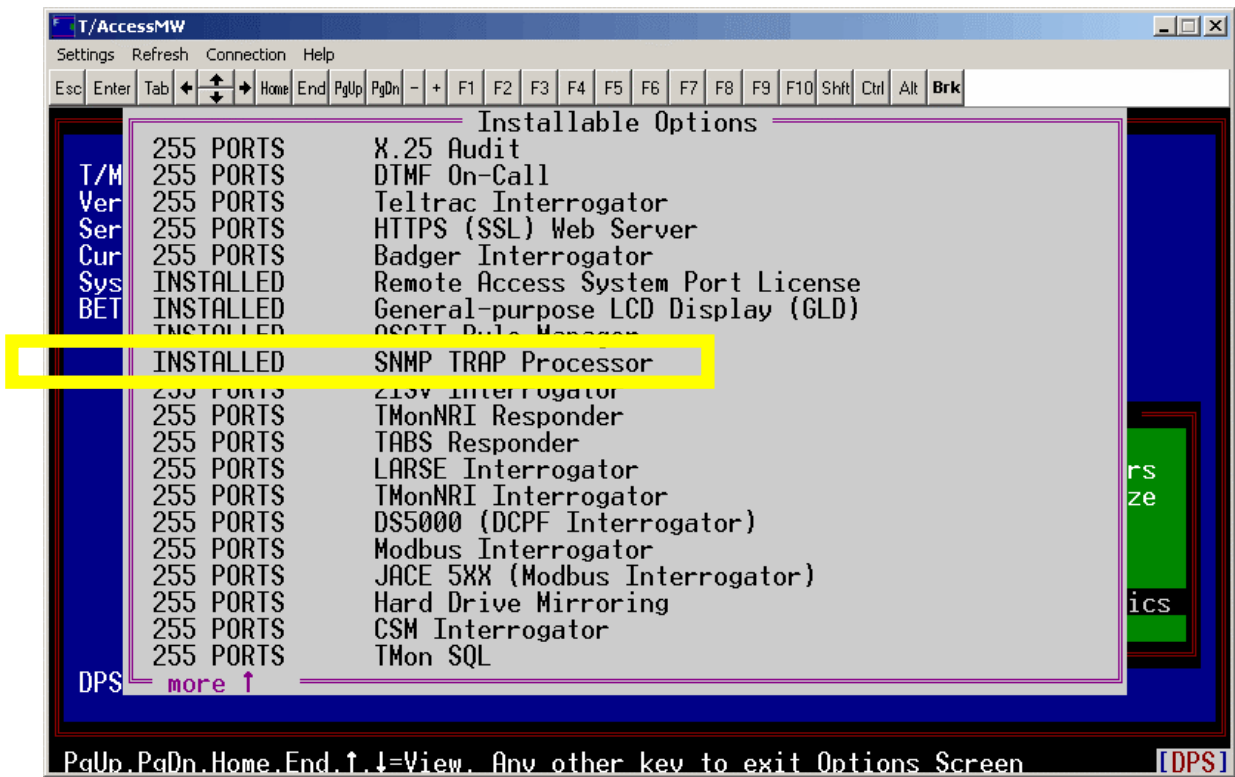


Troubleshooting Checklist

NOTE: In order to receive and process traps, the SNMP Trap Processor module (DPS Part # D-SK-490-10A-00) must be loaded on the T/Mon.

- ❑ **Confirm T/Mon has trap processor module installed**

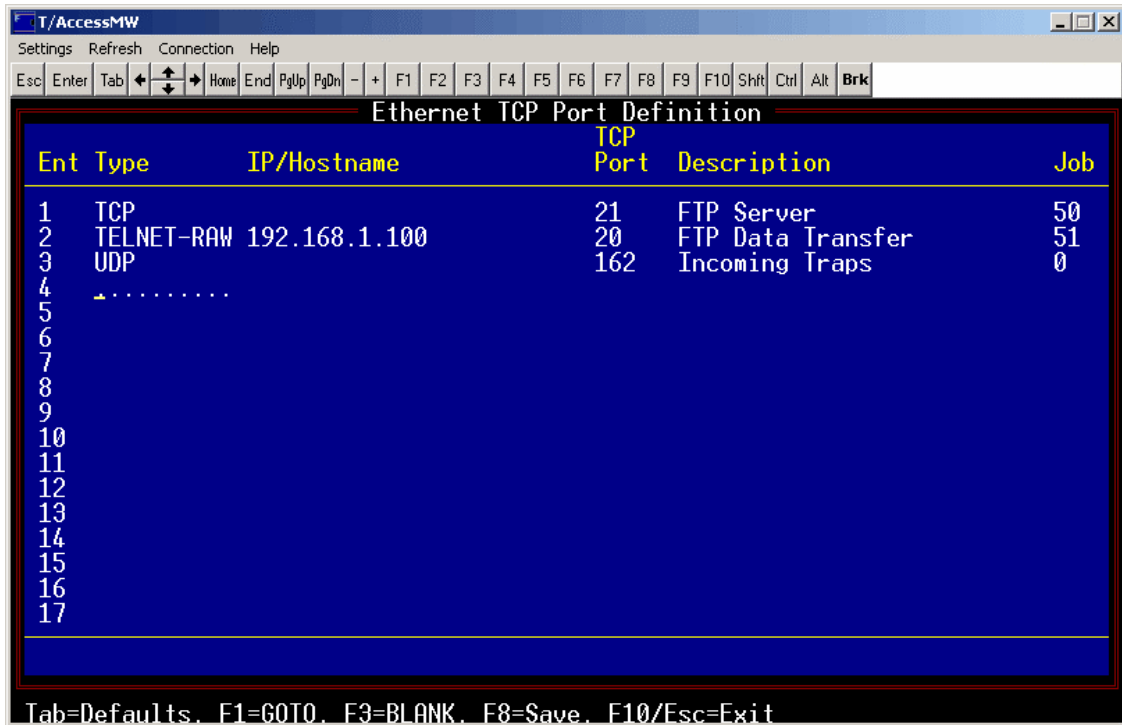
 - If you have already processed SNMP traps on the T/Mon, you may skip this step.
 - If this is your first time setting up SNMP, however, please note that in order to receive and process traps, the SNMP Trap Processor module (DPS Part # D-SK-490-10A-00) must be loaded on the T/Mon.
 - To verify you have this module installed, navigate to “Diagnostics --> Installable Modules --> Installation Status”. Look for SNMP Trap Processor, and the phrase "Installed" to the left of it.
 - If the SNMP Trap Processor module is not on your system, contact Sales at (800) 622-3314



Navigate to the following listing of installed and installable modules to verify that you have the SNMP Trap Processor module installed on your T/Mon system.

❑ **Define a data connection**

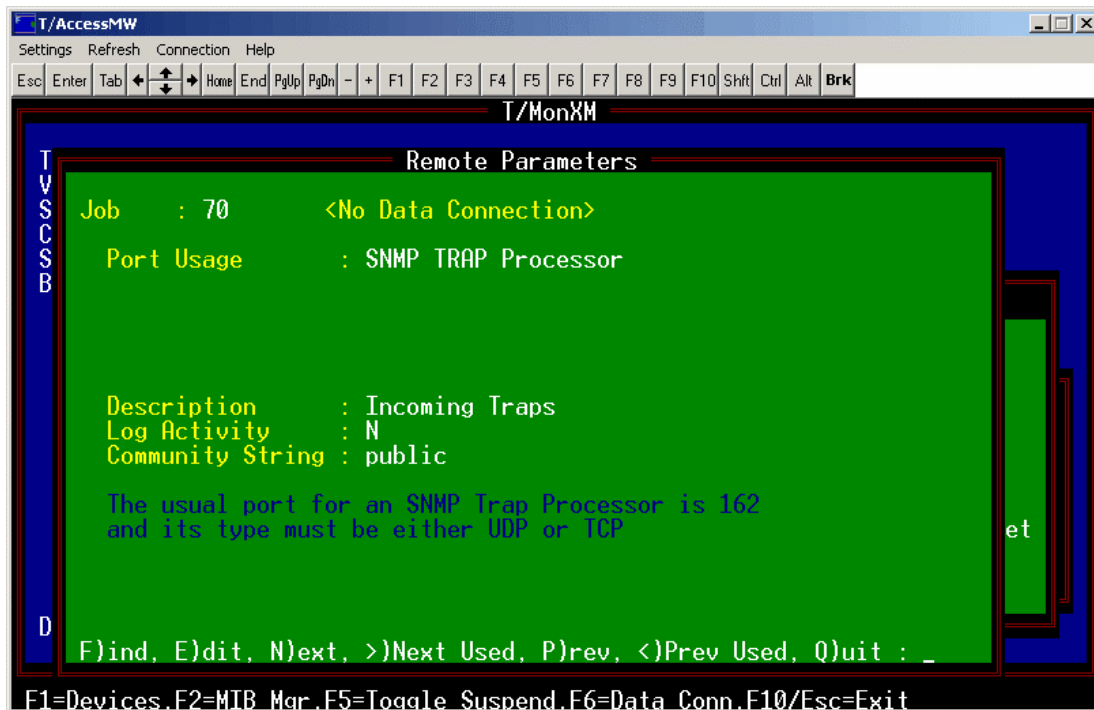
- Navigate to Parameters → Remote Ports
- Press ‘F’ for find
- Enter port 28
- Press F1 to create a new data connection
- Find an unused entry and press the TAB key to bring up a list of default values.
- Choose UDP
- Enter port 162 and a description for the data connection.
 - NOTE: SNMP traps are typically sent over UDP and to port 162, but it is possible to send them over TCP and on any port. Verify with the manufacturer of the device that SNMP traps are being sent over UDP to port 162



Choose ‘UDP’, Port 162, and enter a description, such as ‘Incoming Traps’

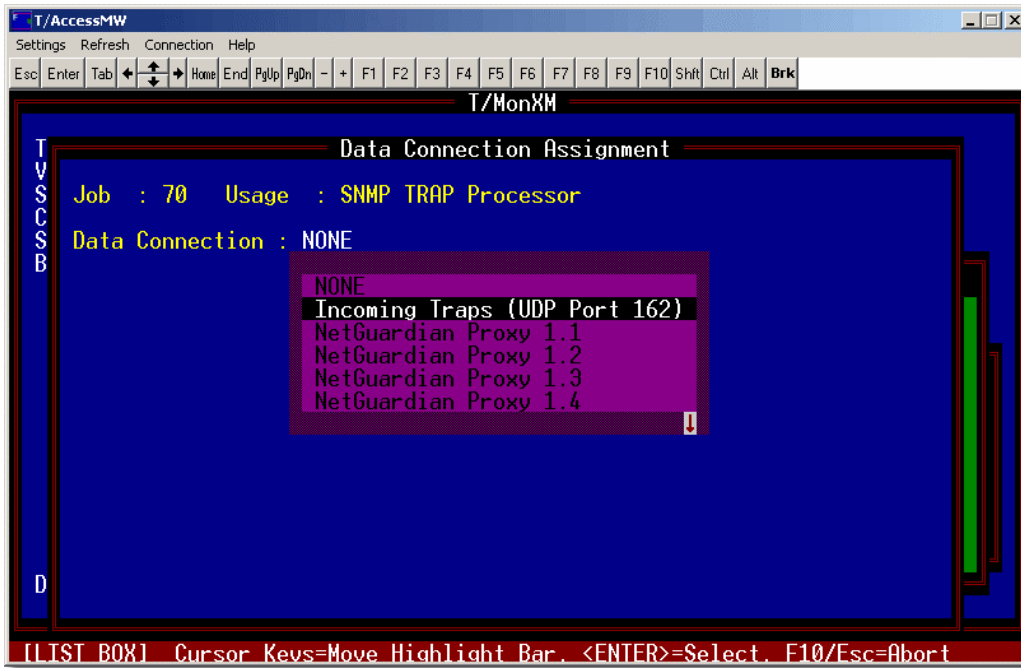
❑ **Create a job for SNMP trap processing**

- Navigate to Parameters → Remote Ports.
- Find a HALTED job above 47
 - Remember, 30-47 are reserved for remote access
- Press 'E' to edit, and 'TAB' to enter the list
- Choose "SNMP TRAP processor" from the list
- Enter a description for the job
- Enter the community string programmed into the device that will be sending the traps
 - NOTE: Community strings are case sensitive



Press the TAB key to enter the list, choose "SNMP TRAP Processor", and enter a description and case-sensitive community string for the job.

- You should now see "<No Data Connection>" flashing at the top of the screen
- Press 'F6' to assign the data connection set up previously
- Press the TAB key to enter the list
- Choose the UDP port 162
- Press enter, assigning this data connection to this job



Press the TAB key to enter the list, and select UDP Port 162 as the data connection assignment

If you continue to have issues setting up an SNMP trap processor job, please contact DPS Telecom Tech Support.
