

**Problem: Unable to Setup FTP Server on T/Mon – IAM  
Platform: T/Mon – IAM, v4.2B and above**

Failure to backup your data can cost you days of re-work. Setting up an FTP server on the T/Mon – IAM platforms allows users to get and put files via FTP. FTP can be used to download log and ASCII files, remotely upgrade software, and backup history and configuration files remotely. The setup process involves just a few quick steps. Use the following "techno knowledge" paper to setup an FTP server on the T/Mon – IAM platforms.



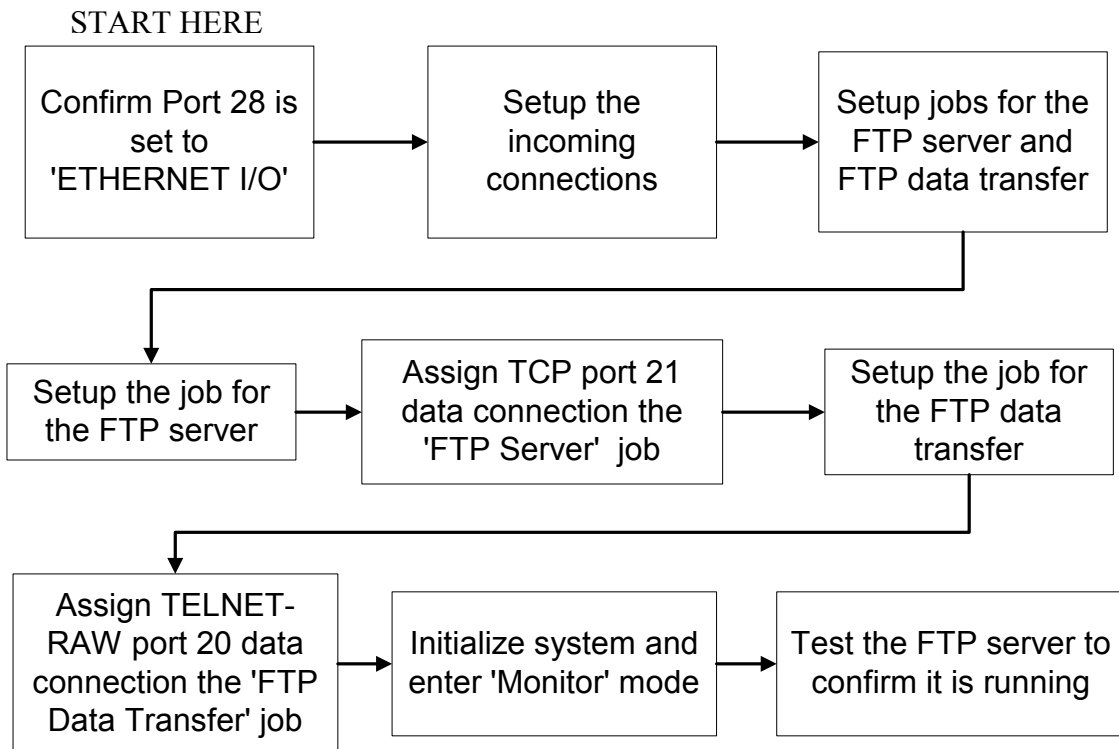
**This "techno knowledge" paper can help you if:**

- You are unable to setup an FTP server on the T/Mon – IAM platforms

**NOTE: You must be running FIRMWARE VERSION V4.2B or above**

Quick Reference Chart

(for more details, review the troubleshooting checklist, starting on page 2 of this guide)

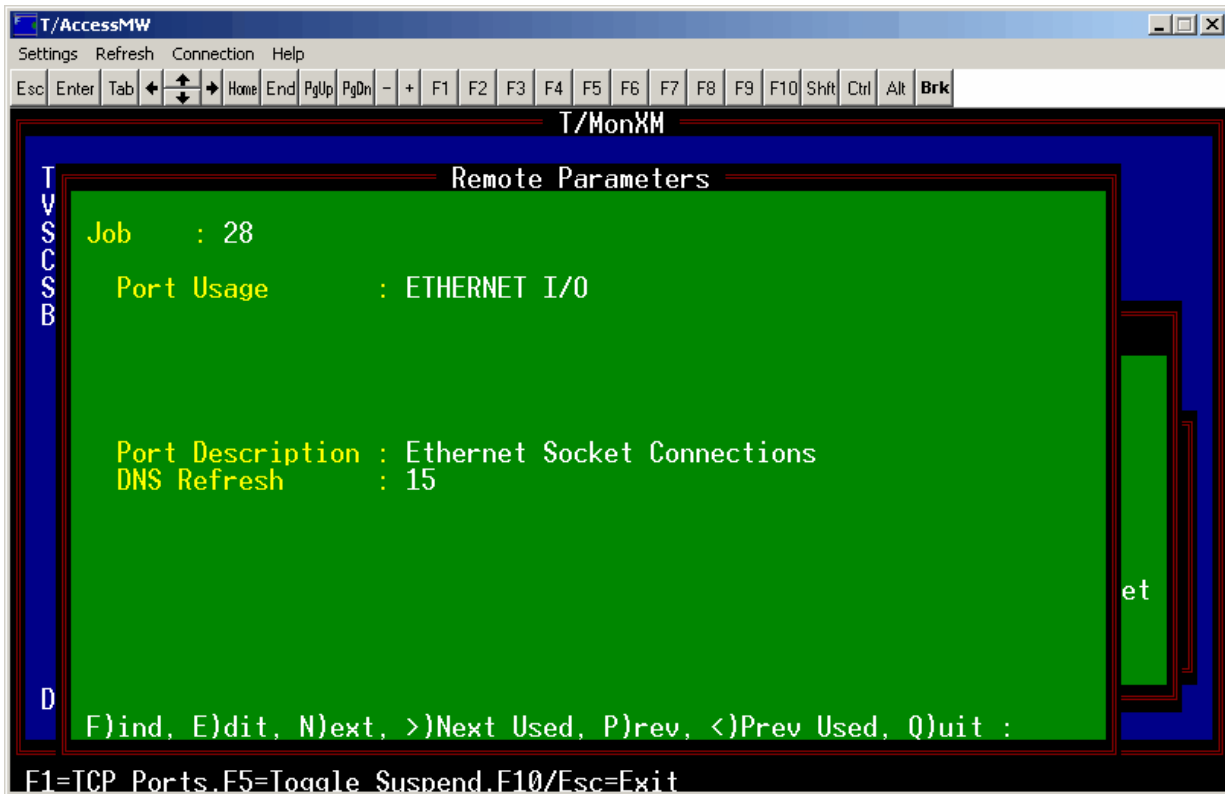


**NOTE: You must be running FIRMWARE VERSION V4.2B or above**

### Troubleshooting Checklist

- ❑ **Confirm port 28 is set to ‘ETHERNET I/O’**
  - Navigate to Parameters → Remote Ports
  - Press "F" to find
  - Find ‘28’
  - Verify this port is set for ‘Ethernet I/O’ –

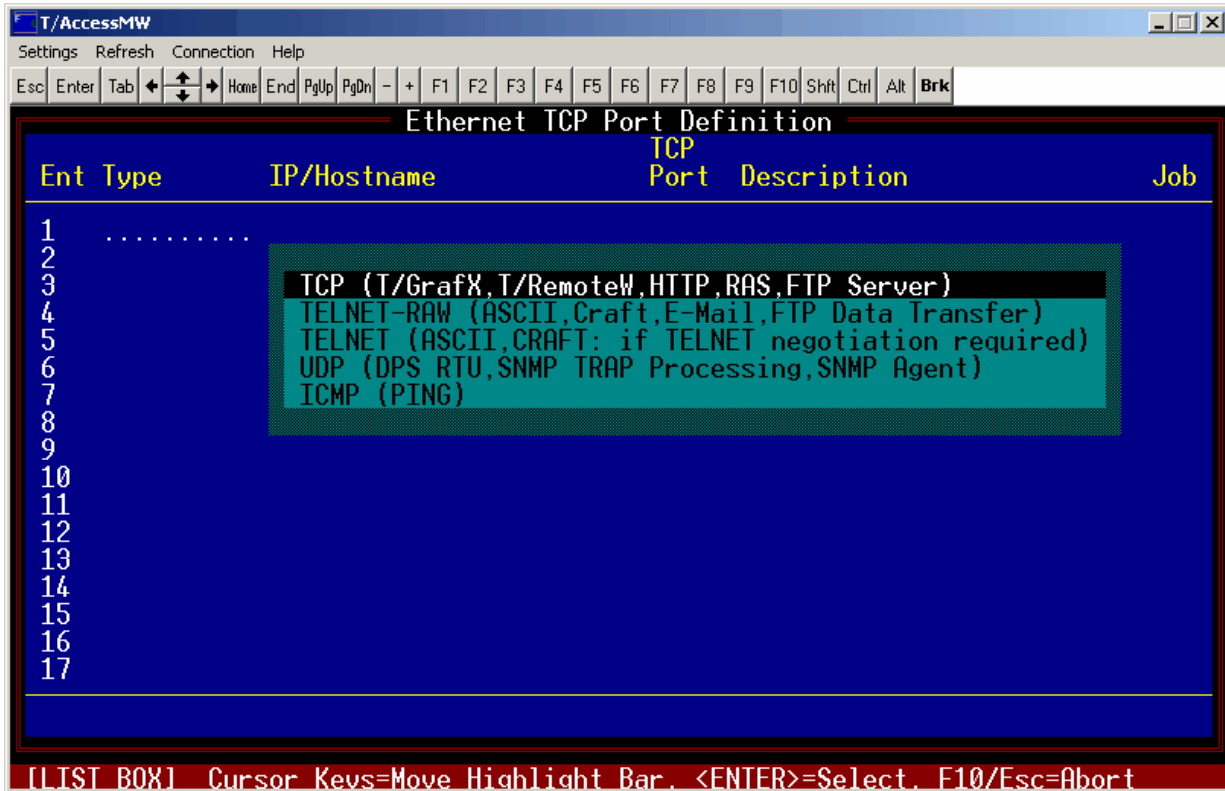
NOTE: Port 28 is the only port that may be setup as ‘Ethernet I/O’



Verify that Port 28 is set for Ethernet I/O

❑ **Setup the incoming connections**

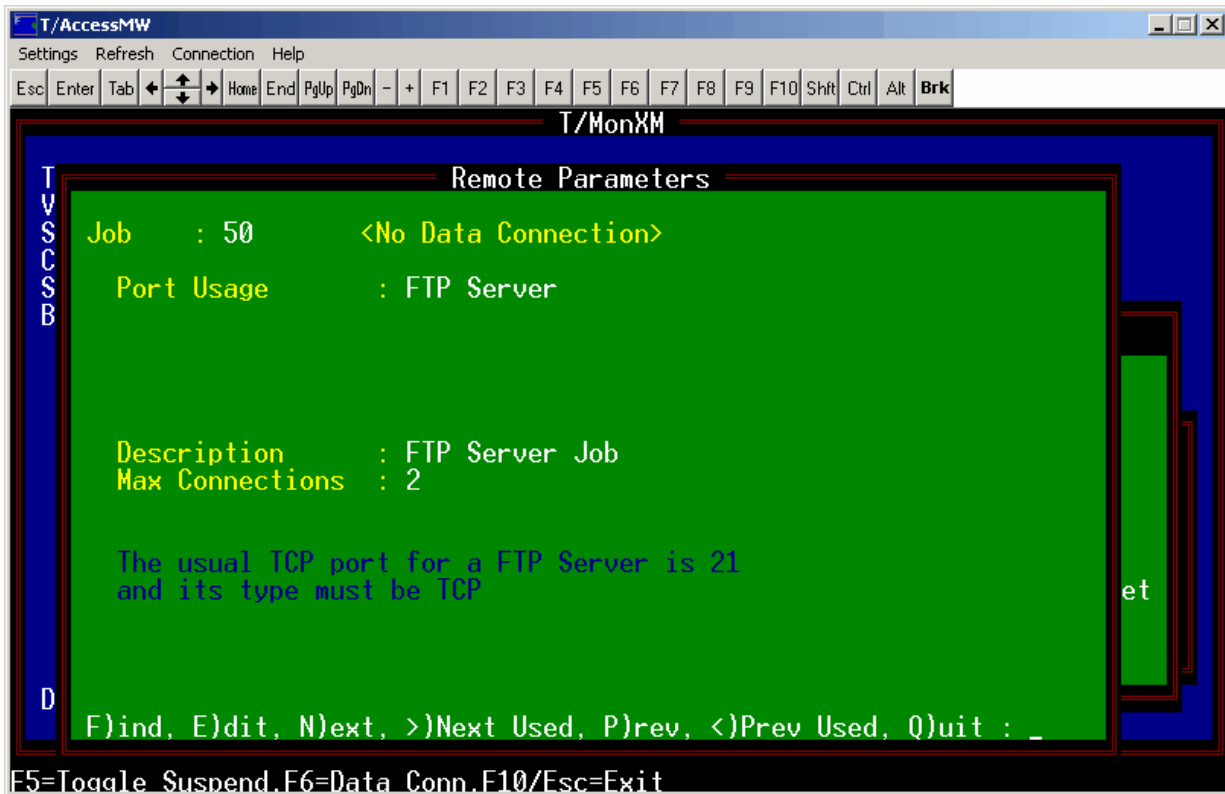
- Press F1 for TCP ports.
- Find an unused entry and press the TAB key to bring up a list of default values.
- Two data connections are required.
  - TCP with a port of 21 (server port). Be specific in your descriptions so you or another administrator will know what this is being used for.
  - TELNET-RAW (data transfer port). Enter the IP Address of your T/Mon-IAM, then port 20. Press ‘Enter’ to cursor the next line
- Press F8 to save.



Setup a TCP connection (port 21) and a TELNET-RAW connection (port 20)

❑ **Setup the job for the FTP server**

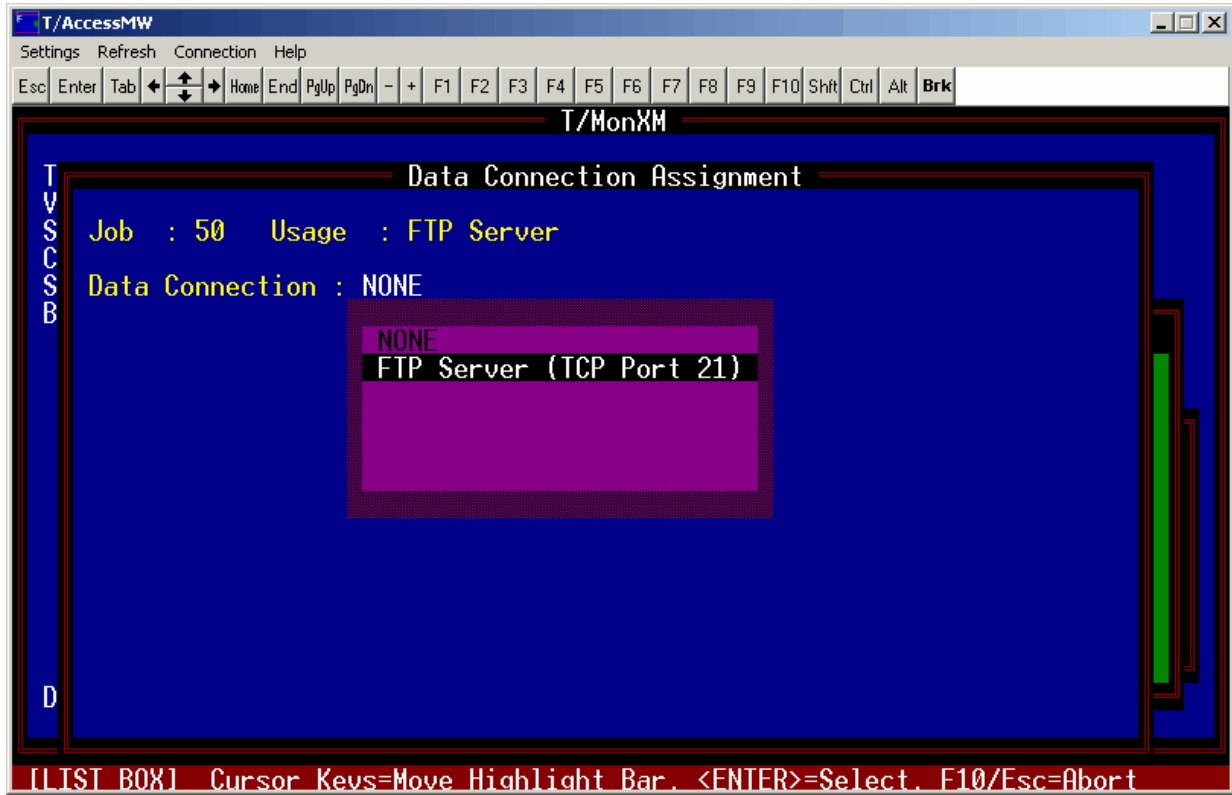
- After entering the TCP ports, you should be at the Remote Ports definition screen. If not, navigate to Parameters --> Remote Ports.
- Find the next "HALTED" job above 47 (remember jobs 30-47 are reserved for remote access) and press "E" to edit the port.
- Press the TAB key to enter the list, and choose 'FTP Server'.
- Enter a description for the Job (free form text field)
- Enter the max connections available. '2' is most commonly used, as one user at a time is typically sufficient (2 connections are required for each simultaneous FTP user).



Choose 'FTP Server', enter a description, and enter the max connections.

You should now see '<No Data Connection>'

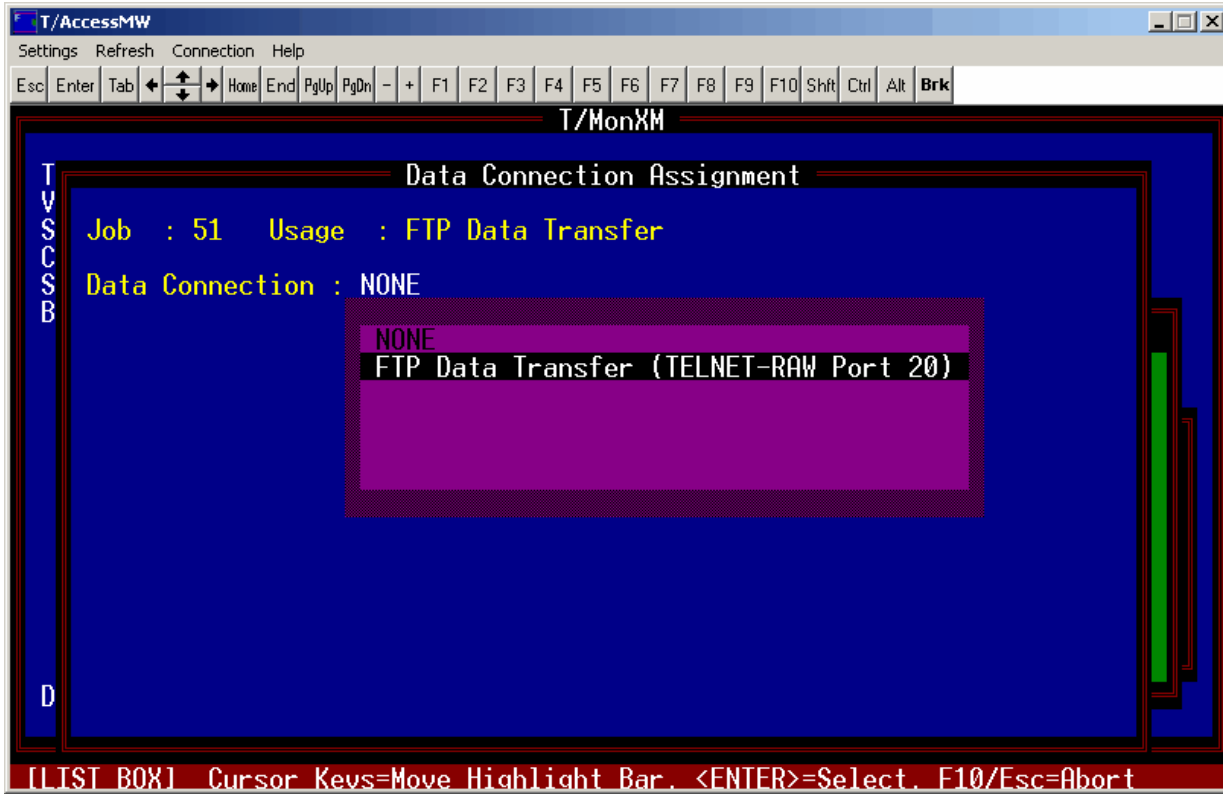
- ❑ **Assign the TCP port 21 data connection to the ‘FTP Server’ job**
  - "<No Data Connection>" should be flashing at the top of the screen.
  - Press F6 to assign the data connection set up previously.
  - Press the TAB key to enter the list and choose the TCP port 21.
  - Press ‘Enter’, assigning this data connection to this job.



Assign TELNET-RAW port 20 to the job

- ❑ **Setup the job for the FTP data transfer**
  - Move to the next port by pressing the ‘N’ key. This job should be HALTED.
  - If the next port is not a HALTED job, continue moving to the next job (press ‘N’) until you find one that is HALTED.
  - Press ‘E’ to edit.
  - Press ‘TAB’ to enter the list.
  - Choose ‘FTP Data Transfer’.

- ❑ **Assign the TELNET-RAW port 20 data connection to the ‘FTP Data Transfer’ job**
  - "<No Data Connection>" should be flashing at the top of the screen.
  - Press F6 to assign the data connection set up previously.
  - Press the TAB key to enter the list and choose the TELNET-RAW port 20.
  - Press ‘Enter’, assigning this data connection to this job.



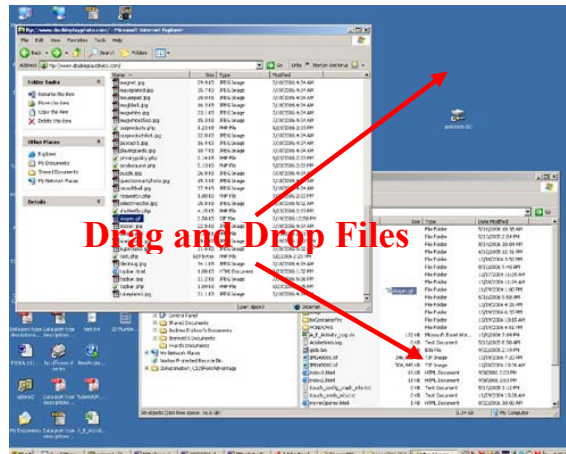
Assign TELNET-RAW port 20 to the job

- ❑ **Put T/Mon in monitor mode**
  - Return to main menu
  - Select ‘Initialize’
  - Select ‘Monitor’

**❑ Test the FTP server to confirm that it is running**

You may test the T/Mon FTP server with any FTP client. One quick and easy way is to use the built-in FTP functionality of Internet Explorer 5+:

1. Open a new Internet Explorer window
2. In the address bar, type: ftp://TheTmonIPAddress  
(i.e. “ftp://192.168.152.178)
3. When prompted, enter your username and password to login.
4. If the FTP server has been setup correctly, you should now see a listing of files on the T/Mon
  - a. If you are trying to access the T/Mon system log, it will be the only \*.sl file in the directory. You may sort by file type or look for the most common filenames: tmonxm.sl, tmonslim.sl and iam.sl
5. To test the FTP server setup, simply drag and drop files to and from the FTP window just as you would with any other Windows Explorer window.



Drag and Drop Files from the FTP window to your desktop or another window to test the T/Mon FTP setup

Remember, the FTP server runs only when the T/Mon is in monitor mode.

Any user that has the ‘Database Xfer’ user right should be able to get and put files via this FTP connection.

---

If you continue to have issues setting up an FTP server on the T/Mon platforms, please contact DPS Telecom Tech Support.

---