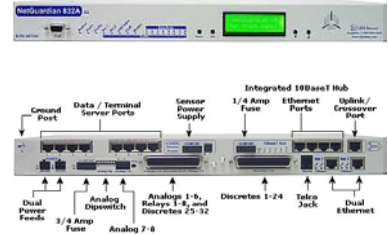


## How to transition from the NetGuardian 832A G2 to the NetGuardian 832A G4 or G5

Eventually, the time may come when you need to install NetGuardian 832A G4/G5 RTUs at new sites. When you upgrade your existing G2's, you need to be prepared for the conversion process. Fortunately, it's just a few quick steps. Use the following techno knowledge paper to help you make a smooth transition to NetGuardian 832A G4/G5.

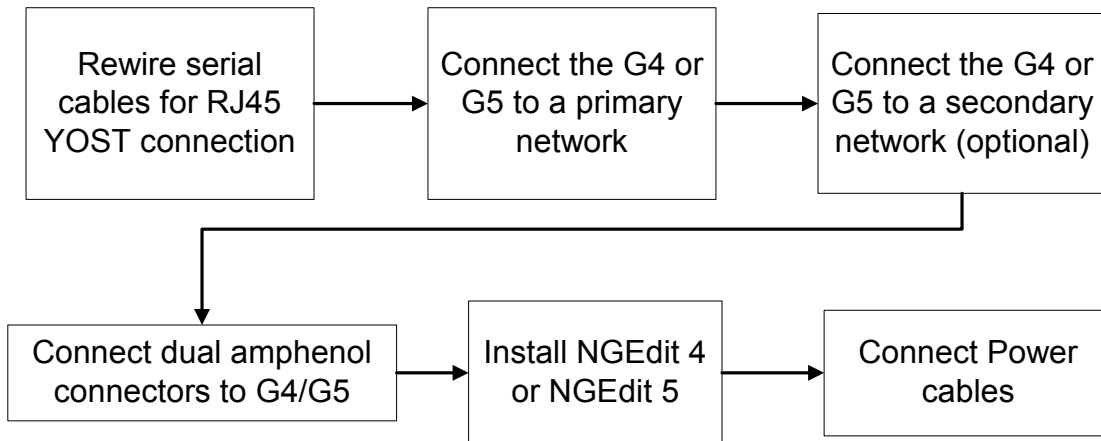


### This techno knowledge paper can help you if:

- You are transitioning from NetGuardian 832A G2 to NetGuardian 832A G4/G5
- You are deploying NetGuardian G4's and G5's at new sites

### Quick Reference Chart

(for more details, review the troubleshooting checklist, starting on page 2 of this guide)

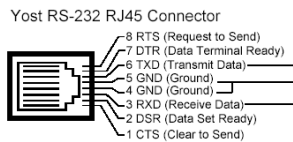
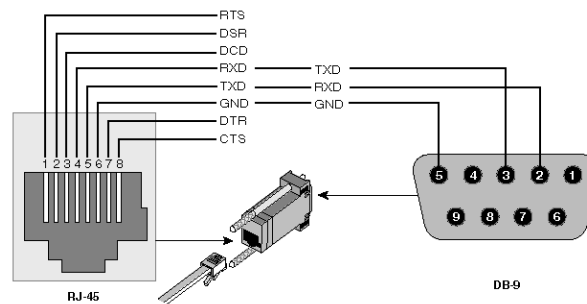


## Troubleshooting Checklist

NOTE: The NetGuardian 832A G4 is easy to install, with industry standard connectors for all serial and LAN ports, alarm, analog, and control wiring. Hinged back panels with all wire wrap or pluggable connections are also available for other installation options.

❑ **Rewire serial cables for RJ45 YOST connection.**

- The NetGuardian 832A G4 serial ports are RJ45 connectors using the YOST standard, so they're much easier to make. It is also easier to crimp RJ45 connectors.



❑ **Connect the G4 or G5 to a primary network.**

- **NOTE:** The NetGuardian 832A features a 100BaseT network connection.

❑ **Connect the G4 or G5 to a secondary network (optional).**

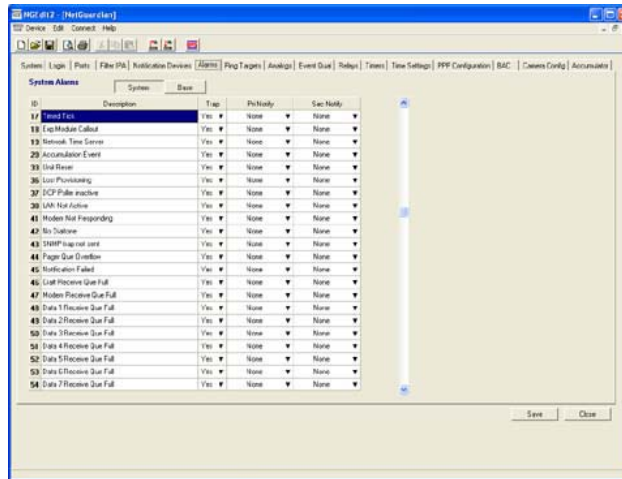
- The NetGuardian 832A G4/G5 also includes a secondary NIC, which permits the G4 to connect to two separate networks.

❑ **Connect dual amphenol connectors to G4/G5.**

- The NetGuardian 832A G4/G5 interface also includes 2 50-pin amphenol connectors. These are the same 2 connectors in your G2. The interface contains wiring for discrettes, controls, and analogs and can be wired in a matter of seconds. Simply unplug the amphenols from the G2 and plug them into the G4/G5.

❑ **Install NGEEdit 4 or NGEEdit 5.**

- The NetGuardian's included Windows configuration utility makes it easy to create standard configurations and upload them via LAN.



- The NetGuardian 832A G2, G4, and G5 use different Windows configuration utilities. The latest versions are available for download at <http://www.DpsTele.com/MyDps/>

❑ **Connect Dual Power cables.**

- The NG832A G4/G5 can be configured with dual-power inputs.