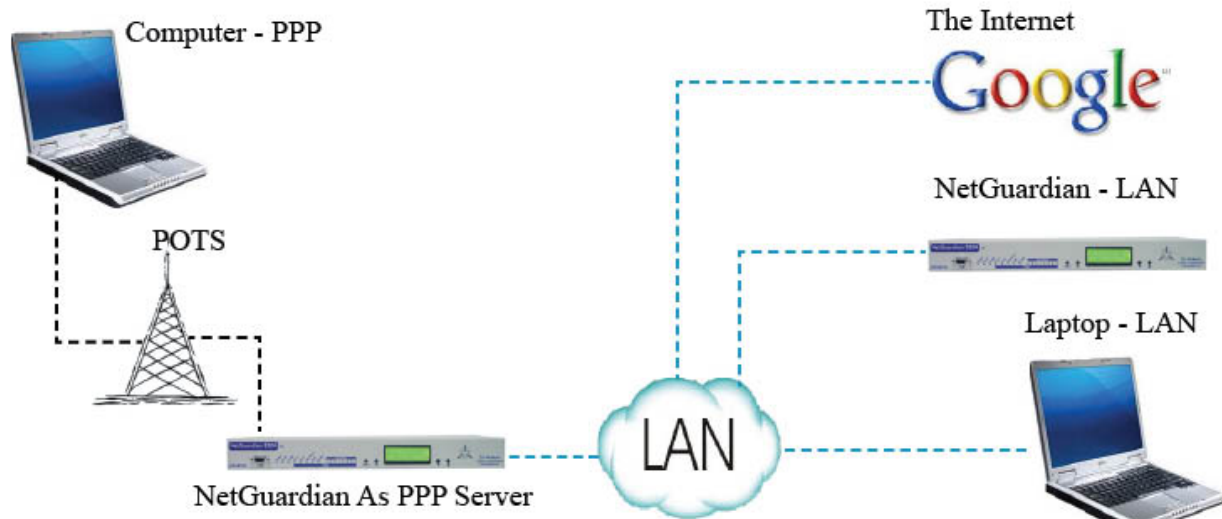


Setup Your NetGuardian as a PPP Server

This TKP will show you how to setup your NetGuardian as a PPP server, allowing you to dial in to the NetGuardian (over a phone line) and browse the network that the NetGuardian is connected to or even access the Internet as if you had a standard dialup connection.

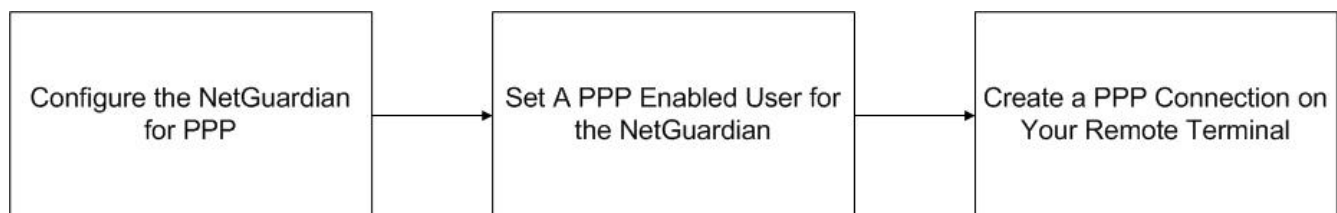


This techno knowledge paper can help you if:

- You need to monitor your NetGuardian's alarms but don't have access to an Internet connection
- You need to connect to the Internet but don't have access to a dial-up service
- Require Access to other devices on the same Network as the NetGuardian

Quick Reference Chart

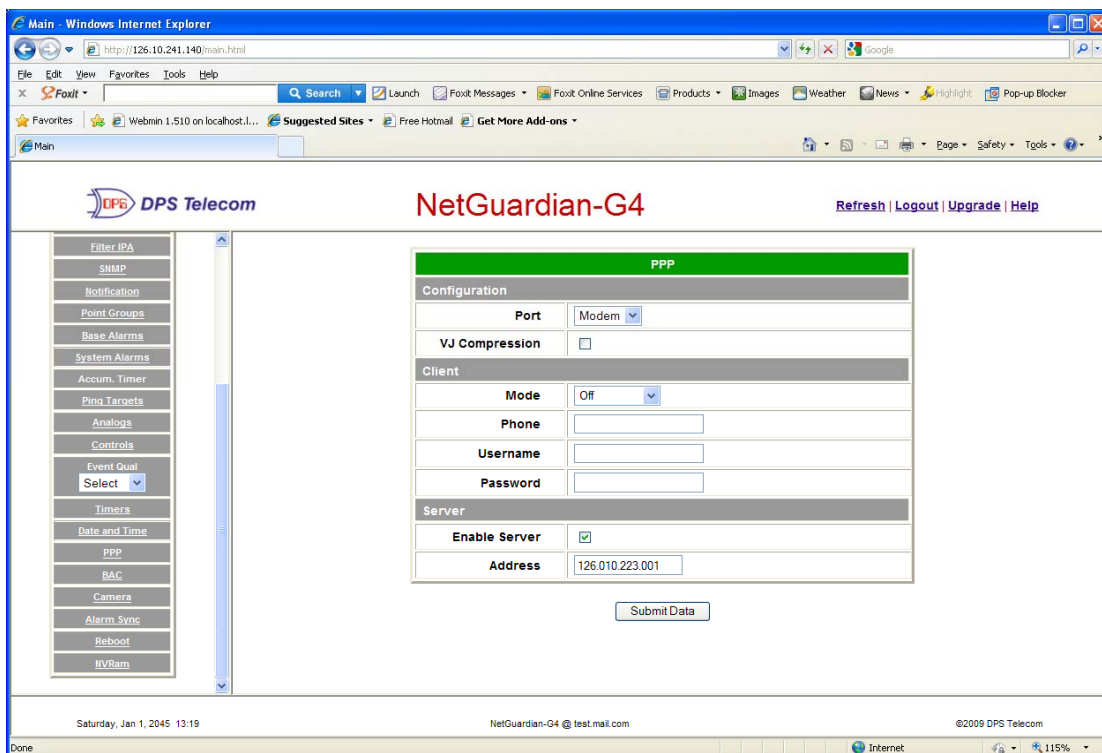
(For details, review the troubleshooting checklist, starting on the next page)



Troubleshooting Checklist

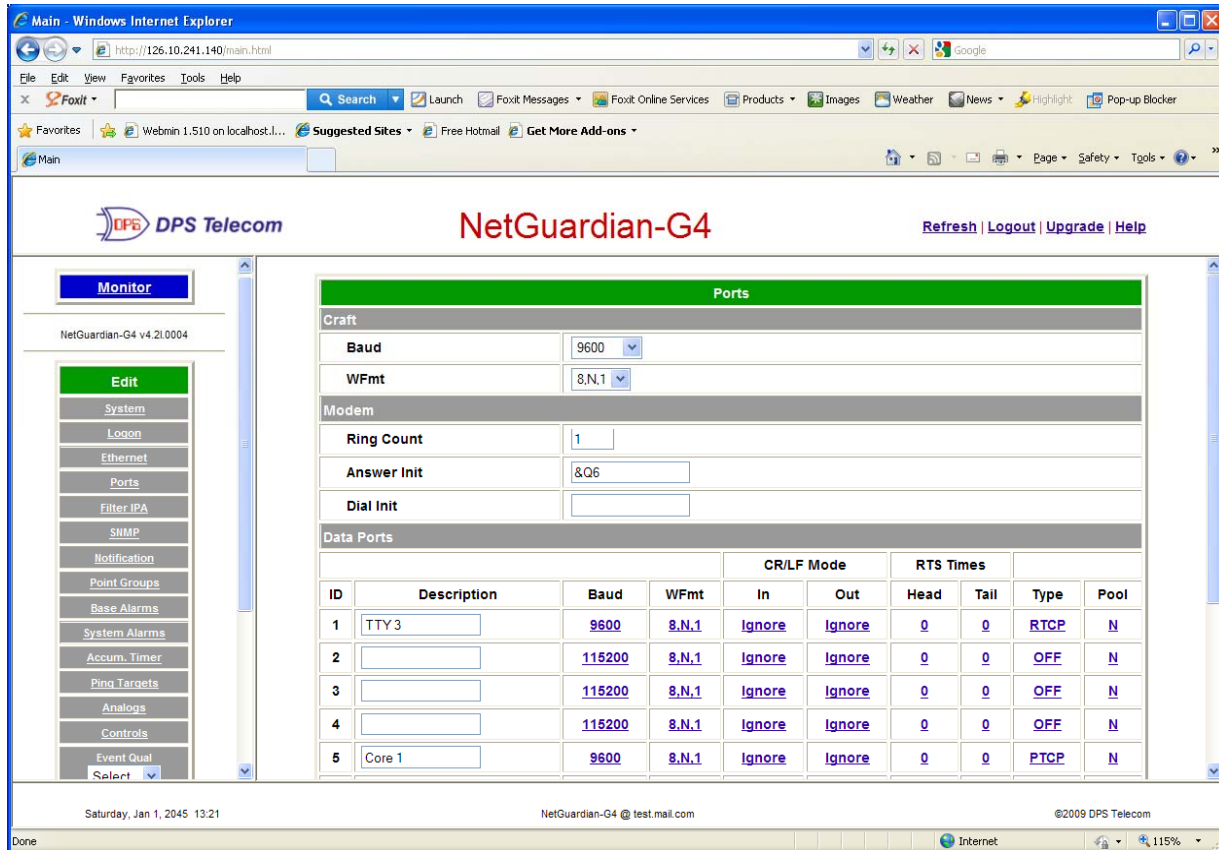
1. Configure the NetGuardian for PPP

- Log into the NetGuardian's Web Interface by typing the IP of the particular NetGuardian you wish to use as a PPP server into your Web Browser's address bar. When prompted, enter your User name and Password
- Click **Edit** in the lower left side of the interface, and then **select PPP** to reach the unit's PPP configuration page.
- Under the Configuration heading, click the drop down box next to **Port** and change the option to **Modem**.
- If using the NetGuardian as a server, toggle the **Enable Server** checkbox and type the IP address you want the NetGuardian to assign your computer so you can access other resources on the NetGuardian's network.



"Your Partners in Network Alarm Management"

- ❑ Now Select **Ports** from the menu on the left. Under the **Modem** heading, set the **Ring Count** to a number greater than 0 and the **Answer Init** to **&Q6** (this enables the modem to buffer).



The screenshot shows the NetGuardian-G4 web interface. The left sidebar contains a navigation menu with the following items: Monitor, Edit, System, Loon, Ethernet, Ports, Filter IPA, SNMP, Notification, Point Groups, Base Alarms, System Alarms, Accum. Timer, Ping Targets, Analogs, Controls, Event Qual, and Select. The main content area is titled "Ports" and contains the following configuration fields:

- Craft** section: Baud (9600), WFmt (8,N,1)
- Modem** section: Ring Count (1), Answer Init (&Q6), Dial Init (empty)
- Data Ports** section: A table with columns for ID, Description, Baud, WFmt, CR/LF Mode (In, Out), RTS Times (Head, Tail), Type, and Pool.

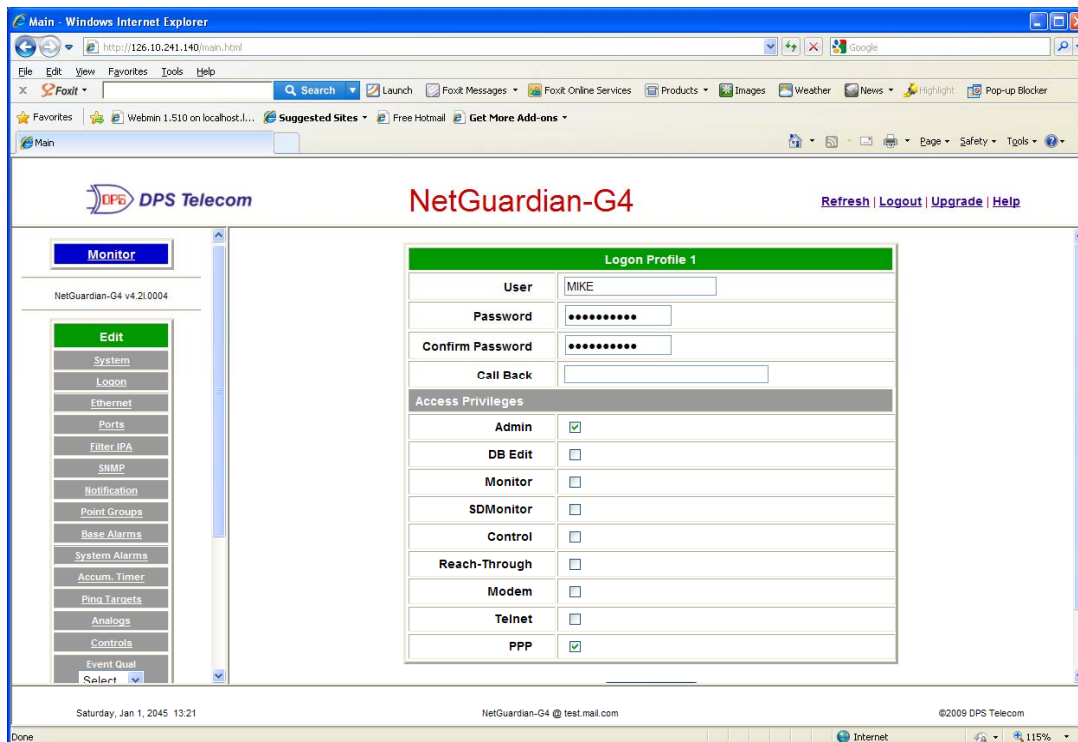
ID	Description	Baud	WFmt	CR/LF Mode		RTS Times		Type	Pool
				In	Out	Head	Tail		
1	TTY 3	9600	8,N,1	Ignore	Ignore	0	0	RTCP	N
2		115200	8,N,1	Ignore	Ignore	0	0	OFF	N
3		115200	8,N,1	Ignore	Ignore	0	0	OFF	N
4		115200	8,N,1	Ignore	Ignore	0	0	OFF	N
5	Core 1	9600	8,N,1	Ignore	Ignore	0	0	PTCP	N

The footer of the interface displays the date "Saturday, Jan 1, 2045 13:21", the email "NetGuardian-G4 @ test.mail.com", and the copyright "©2009 DPS Telecom".

- ❑ Click **Submit Data** to save your settings.

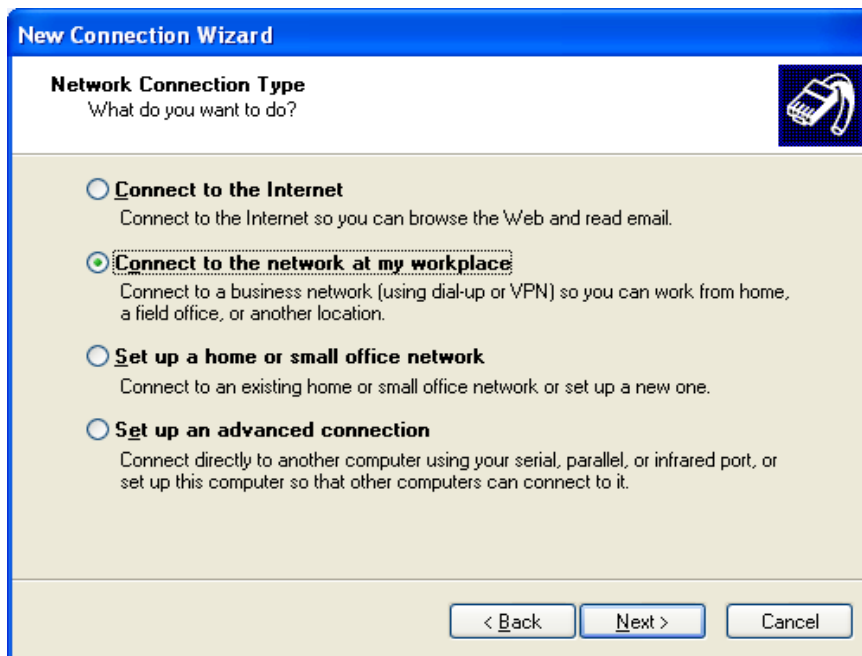
2. Now we must Set a PPP Enabled User

- ❑ Click **Logon** under the edit menu on the left side of the NetGuardian's web interface.
- ❑ You may set a new user and password or modify an existing user, but you must make sure that the user at least has **PPP privileges**, granted by toggling the PPP checkbox under Access Privileges.



- ❑ Click **Submit Data**
 - ❑ Click **Reboot** in the edit menu so the NetGuardian saves and implements your changes.
- ## 3. Now we have to Create a PPP Connection on Your Remote Terminal (the Windows-based computer you intend to use to gain network access through the NetGuardian).
- ❑ Go to the Control Panel and open **Network Connections**
 - ❑ Under Network Tasks, select **Create a New Network Connection**.
 - Click **Next** to create the new Network connection.

- Select **Connect to the Network at my workplace**



- Select **Use a Dialup Connection**
- The connection wizard will ask for a company name. Enter whatever you like in this field; the information is inconsequential.




- ❑ Enter the phone number the PC will dial to reach the NetGuardian.

Note: Be sure to enter any additional numbers as required by your phone service or network (e.g. you must dial 9 to reach an outside line or 1 to start a long distance connection). If you need any additional time after dialing certain numbers, a comma between digits will provide a 2 second delay. In the following example, the modem will dial 9, wait 2 seconds, and then dial the NetGuardian's phone number.



New Connection Wizard

Phone Number to Dial 

What is the phone number you will use to make this connection?

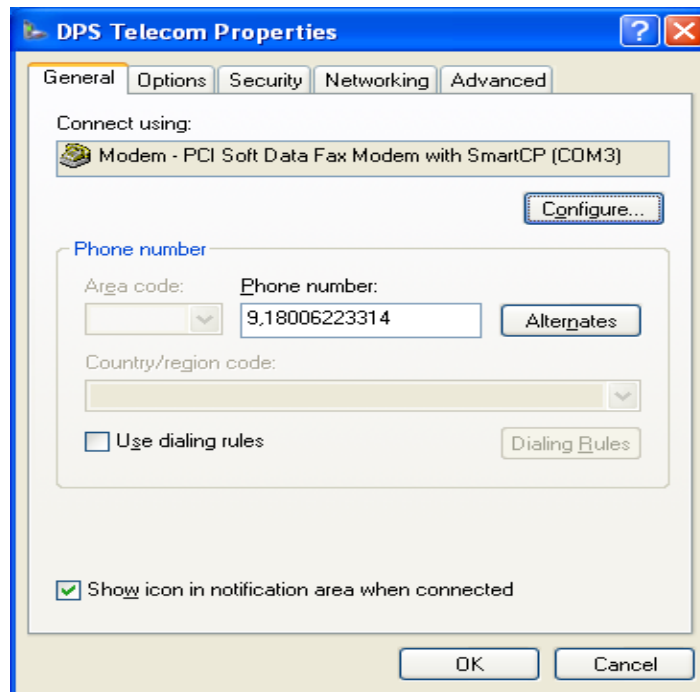
Type the phone number below.

Phone number:

You might need to include a "1" or the area code, or both. If you are not sure you need the extra numbers, dial the phone number on your telephone. If you hear a modem sound, the number dialed is correct.

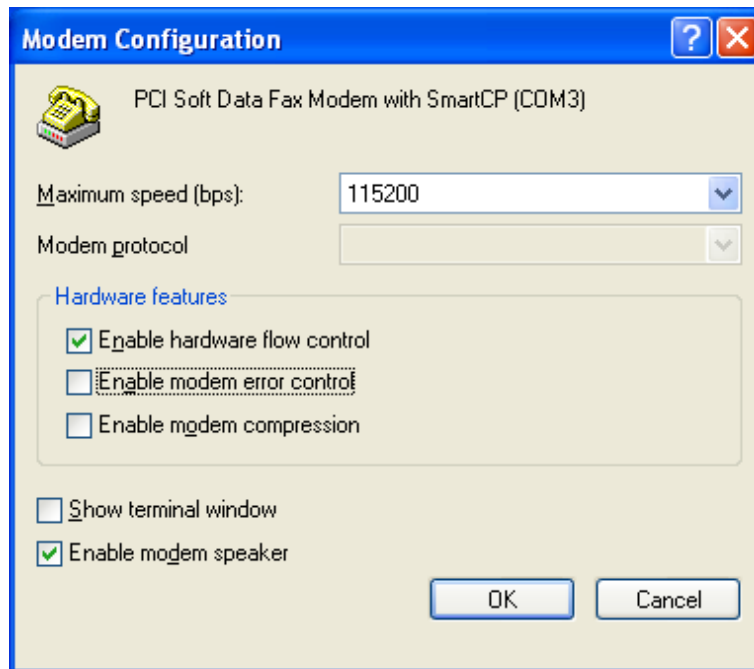
< Back Next > Cancel

- ❑ You can choose to add an icon to the desktop, then **Press Finish**
- ❑ Your New Connection should automatically open. Click **Properties**, then, in the General tab, click **Configure**.



In the **Modem Configuration** window that appears, be sure:

- **Enable modem control** is checked
- **Enable modem compression** is unchecked
- If using Windows 98, the baud rate is set to 9600





Now you're ready to **Connect to the NetGuardian using your PPP connection**

If the following TKP did not solve your problem check the following:

- Make sure that your NetGuardian's Telco RJ11 jack is connected to a phone line
- Check to see if your phone system requires any additional outgoing commands (e.g. pressing 9 to transfer to an outgoing line).

If you continue having trouble, please contact DPS Telecom tech support at (559) 454-1600 or support@dpstele.com.
