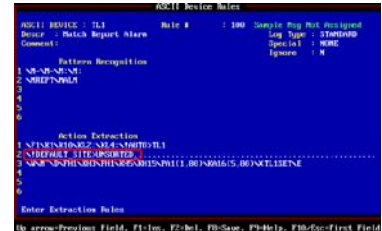


## How to set the Default Site Directive on Your ASCII Processor Platform: T/Mon NOC & T/Mon SLIM

T/Mon has provisions for predefining all the sites/nodes that you expect to receive alarm information from. But what happens when someone changes a site name, or adds a site/node without notifying you?



By default, T/Mon finds the last available point and assigns the alarm to that site. However, this can cause confusion for you, as alarms may not show up under the proper site name and window.

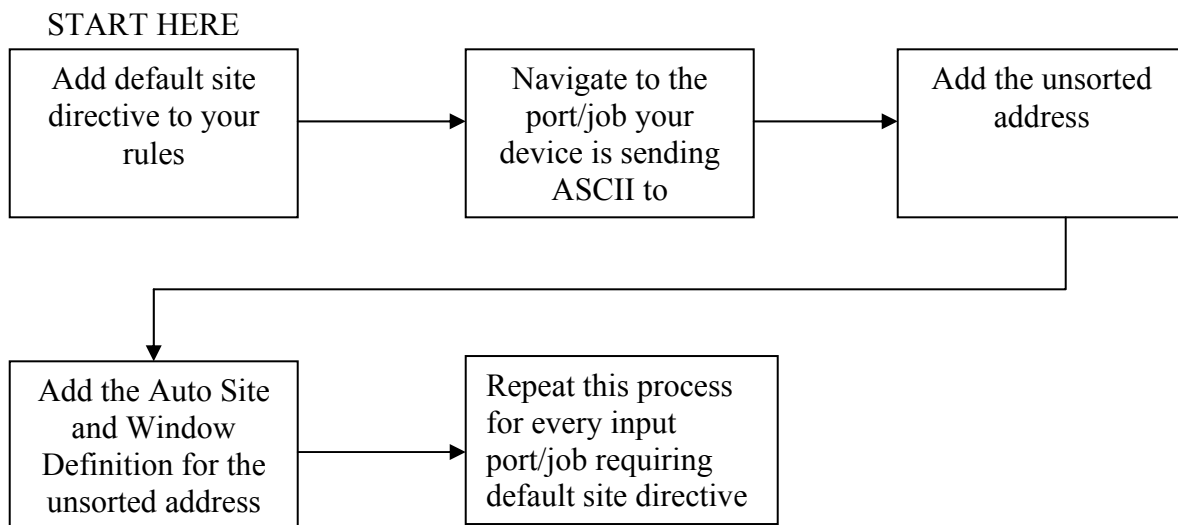
The powerful ASCII processor on the T/Mon has a provision to plan for such circumstances. It is called the “default site directive” and it allows you to create an “unsorted” address that holds these alarms until the correct site is defined. Learn how to do it in this techno knowledge paper

### This techno knowledge paper can help you if:

- You’re getting confused by site name changes or new sites/nodes in ASCII messages

### Quick Reference Chart

(for more details, review the troubleshooting checklist, starting on page 2 of this guide)



## Troubleshooting Checklist

**NOTE:** To process ASCII, you must install the ASCII software module.

**NOTE:** For the following checklist, the site name of “UNSORTED” will be used. You can change this to whatever name you would like the operator to see if an alarm comes from an undatabased site.

### ❑ Add default site directive to your rules

- From T/Mon Master Menu, Navigate to ‘Files’
- Select “ASCII Rules”
- Find the rule to which you would like to add the directive to
- Add “\!DEFAULT\_SITE>UNSORTED” anywhere in the rule

```
ASCII Device Rules
ASCII DEVICE : TL1          Rule #      : 100  Sample Msg Not Assigned
Descr  : Match Report Alarm  Log Type : STANDARD
Comment:                      Special  : NONE
                                           Ignore   : N

      Pattern Recognition
1 \M-\M-\M:\M:
2 \MREPT\MALM
3
4
5
6

      Action Extraction
1 \F1\K1\K10\K2:\K14:\!DEFAULT_SITE>UNSORTED\!AUTO>TL1
2 \M"\D\FH1\KH3\FH1\KH5\KH15\PA1(1,80)\KA16(5,80)\TL1SETNE
3
4
5
6

F)ind, E)dit, D)elete, N)ext, P)rev, M)ove, R)ead, Q)uit :
F3=Sample, F4=Debug, F5=Compile, F6=Manage, F7=Auto, AF6=Imp/Exp, F9=Hlp, F10/Esc=Exit
```

The name you enter here must match the Site Key you database on the Auto-ASCII Site Definition Screen

### ❑ Navigate to the Port/Job your device is sending ASCII to

- Enter the ‘Remote Parameters’ screen
- Check your input port/job to make sure it is the correct one

```
T
U
S
C
S
B

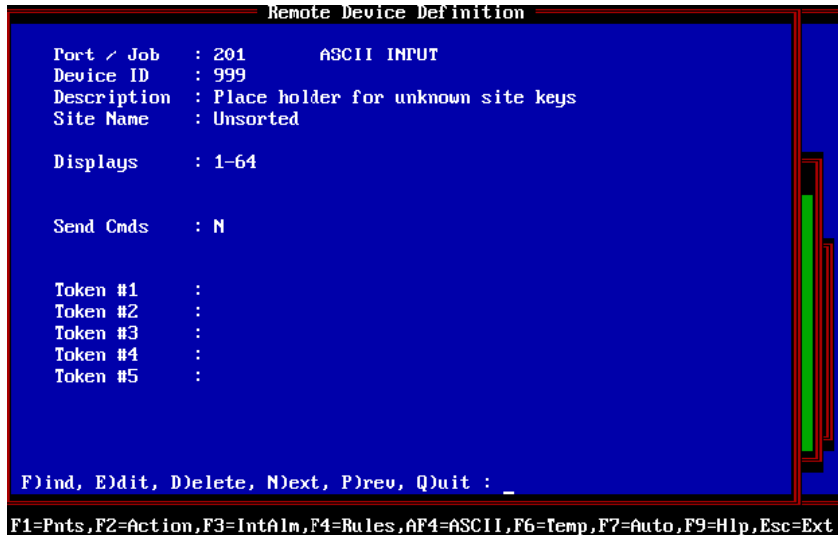
Remote Parameters
Job      : 201      OC48 Sonet TL1 Gateway (TELNET Port 23)
Port Usage : ASCII INPUT

Port Description : OC48 Sonet Ring
Alarm Alias Port :
Template Port    :
Auto Databasing : Y
Log Exceptions   : N
Log All Activity : N
Inactive Timeout : 0
Inactive Alarm   :
Disab Keep-Alive : N

D
F)ind, E)dit, N)ext, >)Next Used, P)rev, <)Prev Used, Q)uit :
F1=Dev, F5=Tog Susp, F6=Data Comm, F7=Buf, AF1=Ref, AF5=Move, F10/Esc=Exit
```

❑ **Add the unsorted address**

- From 'Remote Parameters' screen, Press "F1" to get to the device definition for your input
- Press "F" to add/find any available address

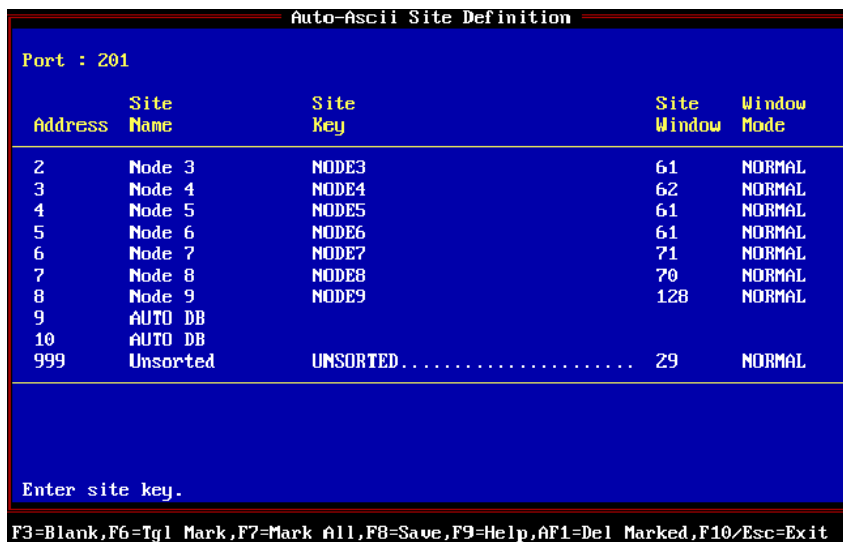


❑ **Add the Auto Site and Window Definition for the unsorted address**

- Press "F7" to get to the auto site key definition screen
- Enter your site key from the directive rule

**NOTE:** Make sure that your Site key, Site Name, and assigned address in the Auto-Ascii Site Definition screen (shown below) match the Site Key, Site Name, and Device ID in the Remote Device Definition screen (shown above).

**NOTE:** T/Mon will use the site key of UNSORTED if it does not find an exact match between the contents of Key slots 10-14 and the site keys defined here.



- 
- ❑ **If you'd like to use default site directive on other devices, return to the first step and repeat the process for each input port/job.**

---

If you continue to have issues setting up the default site directive, please contact DPS Telecom Tech Support

---