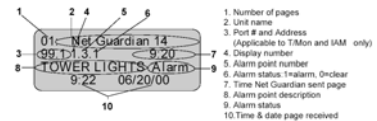


How to setup Alphanumeric Pager notifications from a NetGuardian 832A Platform: NetGuardian 832A

The NetGuardian 832A allows you to send alarm notifications to eight devices, including email, cell phone, and pager. This provides enhanced network visibility.



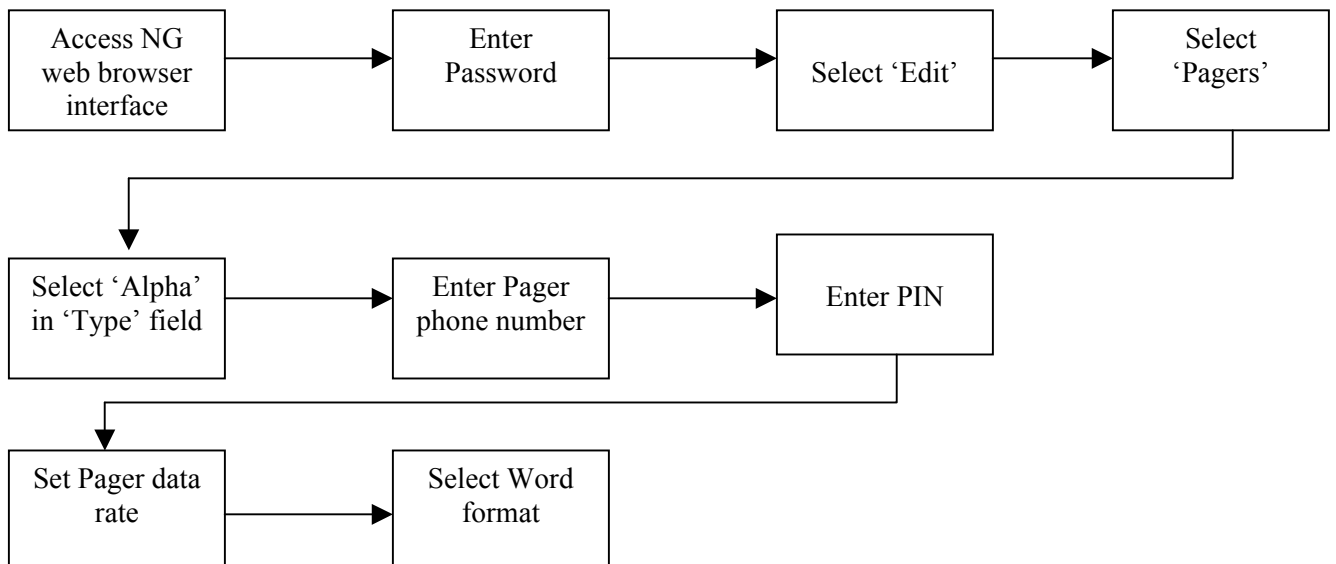
Alphanumeric pager notifications are especially useful, as you can receive detailed alarm descriptions right from the field.

This techno knowledge paper can help you if:

- You are setting up alphanumeric pager notifications for the NetGuardian 832A.

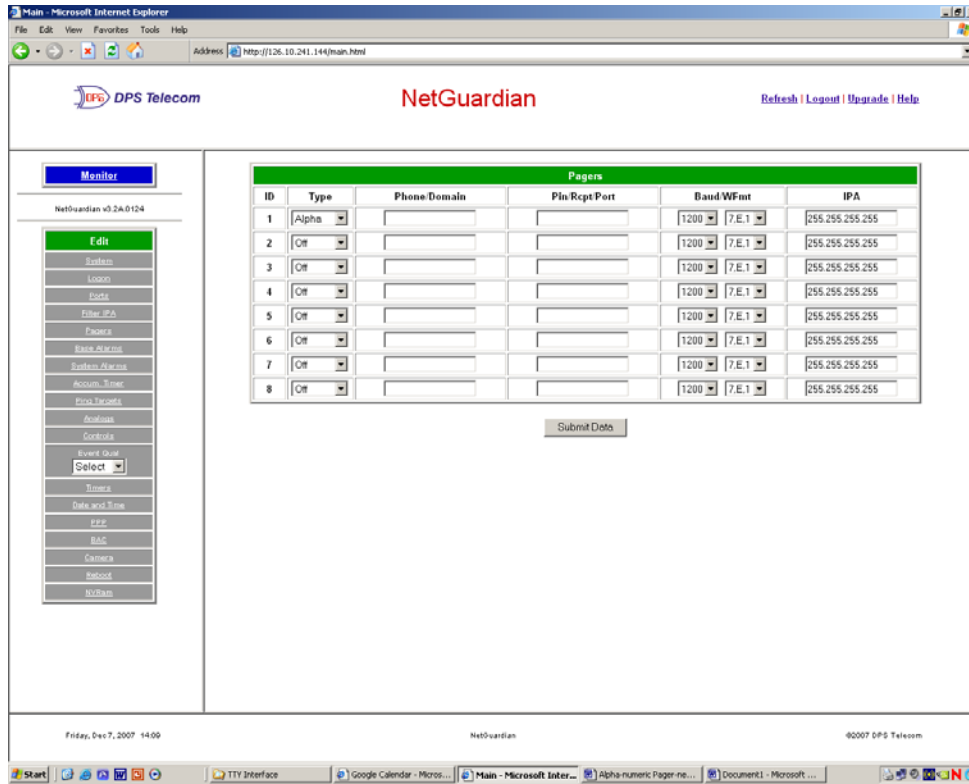
Quick Reference Chart

(for more details, review the troubleshooting checklist, starting on page 2 of this guide)



NOTE: While the following procedure references the NetGuardian Web interface, you can also use NGEEdit.

Troubleshooting Checklist



From the Pagers menu, you can view and change the notification type parameters

- ❑ **Access the NetGuardian Web browser interface.**
 - Type the IP address of your NetGuardian into your web browser and press “Enter”
- ❑ **Enter your password.**
 - Default is “dpstelecom”
- ❑ **Select ‘Edit’ from the left panel.**
- ❑ **Select ‘Pagers’ from the Edit Menu.**

- ❑ **Select an available Pager ID row.**

- ❑ **Select “Alpha” under the Type column.**

- ❑ **Enter Pager phone number.**
 - Enter the phone number of the alphanumeric pager under the “Phone/Domain” column.

- ❑ **Enter PIN**
 - Enter a pager personal identification number (PIN) under the “PIN/Rcpt/Port” column.

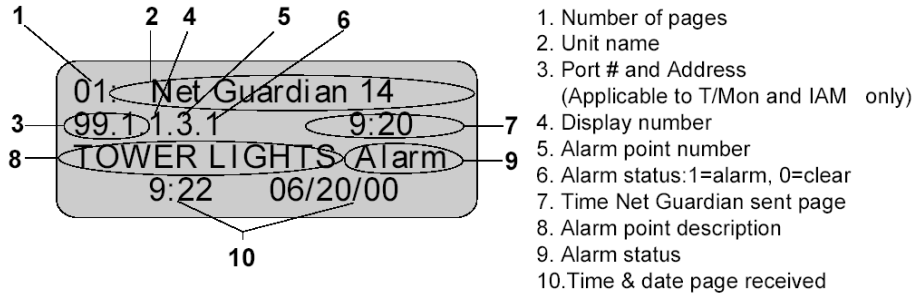
- ❑ **Set Pager data rate.**
 - Set the pager data rate under the “Baud” column. For example 300, 1200, 2400 or 9600. The default baud is 1200.

- ❑ **Select Word format.**
 - Select a pager word format, for example Data bits: 7 or 8, Parity: none (N), even (E) or odd (O), and Stop Bits: 1). The default setting is “7,E,1.”

- ❑ **IPA need not be set for pager. Leave as default.**

Alphanumeric pager should now be setup.

- Once all the steps have been completed, you should begin receiving alarm notifications in the following format:



Alphanumeric pager description

If you continue to have issues setting up Alphanumeric paging notification, please contact DPS Telecom Tech Support
