

## Problem: Need To Migrate From NetGuardian 832A G2 To The NetGuardian G4/G5

**Platforms:** NetGuardian 832A G2

Over time, you may decide to upgrade your existing NetGuardian G2 RTUs that are currently protecting your valuable network. Though just as effective, the G4 and G5 NetGuardians possess greater processing speed and functionalities.

In order to make this change, you'll need to find a way to make this upgrade, without losing your important databases.



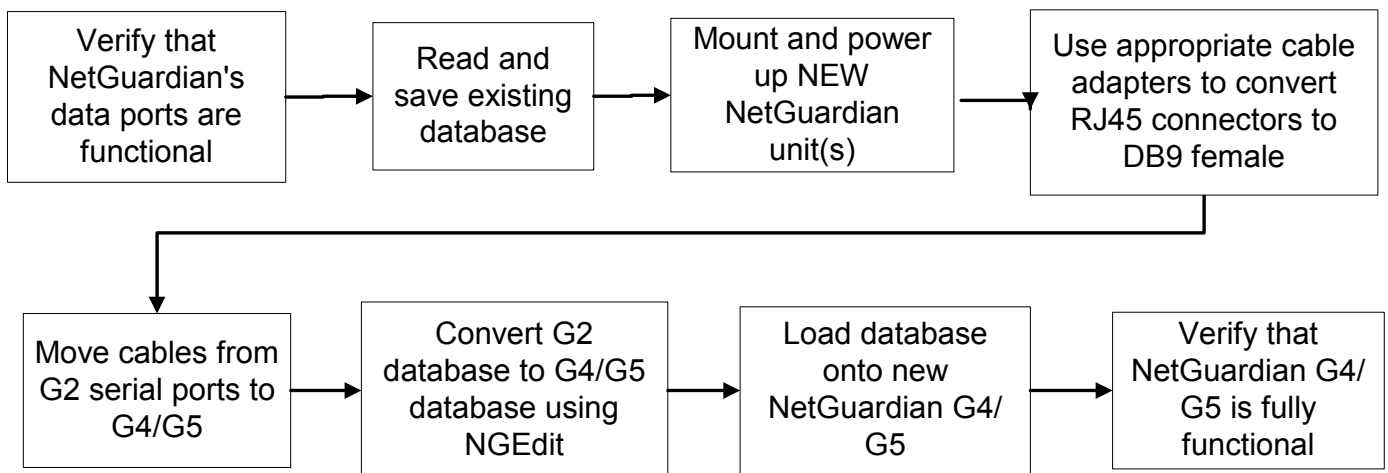
### This techno knowledge paper can help you if:

- You are planning to migrate from the NetGuardian 832A G2 to NetGuardian 832A G4 or G5 units.

### Quick Reference Chart

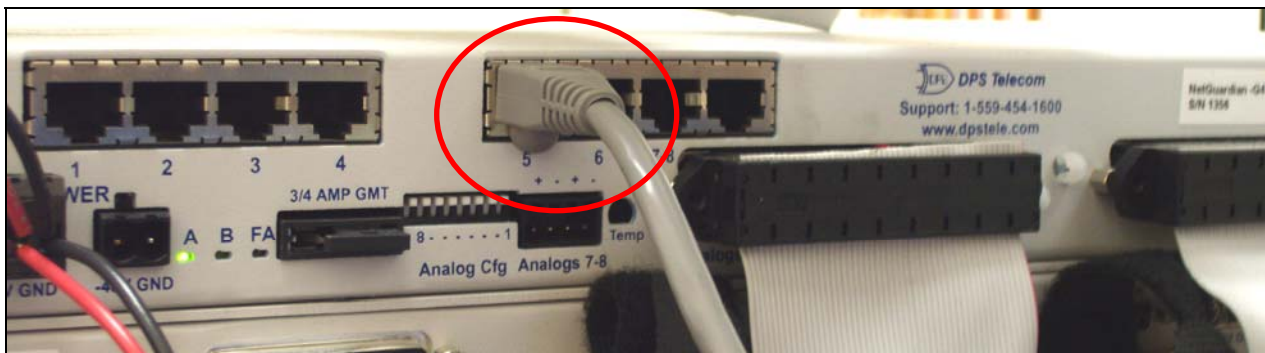
(for more details, review the troubleshooting checklist, starting on page 2 of this guide)

START HERE



## Troubleshooting Checklist

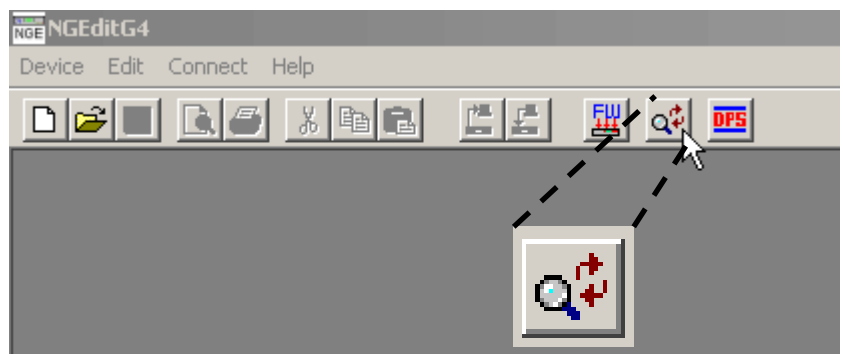
- ❑ Verify that all used data ports on your existing NetGuardian G2 are fully functional.
- ❑ If you do not have a current database saved or are unsure, read and save your existing database.
- ❑ Mount the new NetGuardian 832A G4 or G5.
- ❑ Power up the new NetGuardian G4 or G5 unit.
- ❑ Use either the RS-232 serial cable adapter (D-PK-NGCBL-12001) or the RS-485/202 cable adapter (D-PK-NGCBL-12002) to convert the RJ45 connectors to DB9 female. This adapter will allow you to move the cable to a new platform without having to re-do your cables.



*Plug adapter cable into the appropriate ports on NetGuardian G4/G5.*

- ❑ Move the cables from the serial ports of the NetGuardian G2 to the NetGuardian G4/G5.
- ❑ Use the new NGEEdit feature to import the old database and convert to the new format.

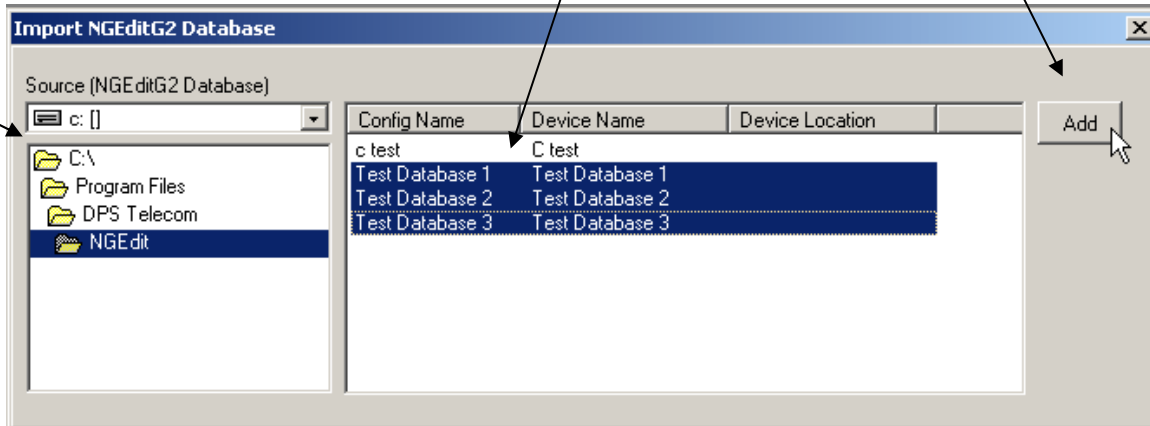
*Click the Magnifying glass icon to import the old database.*



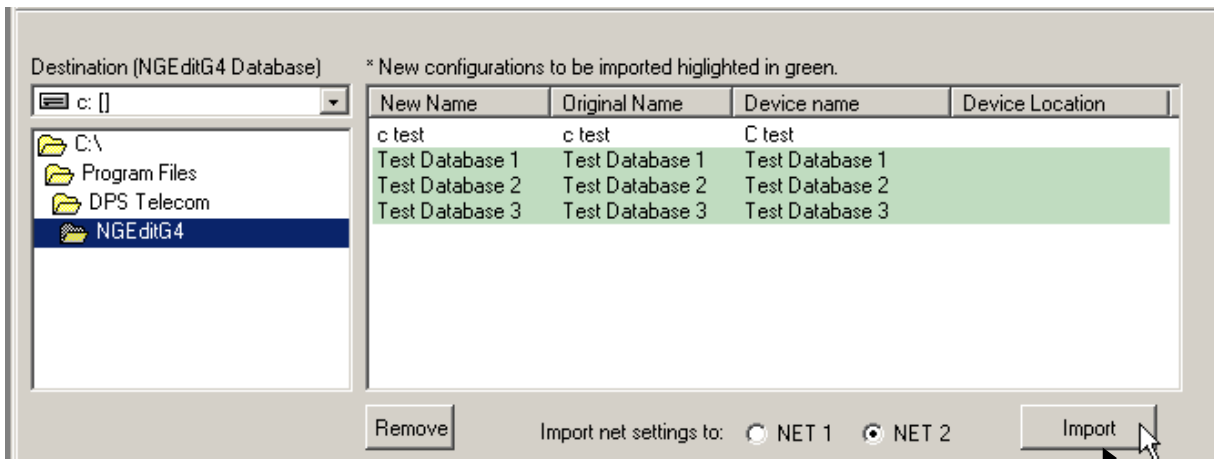
Browse here for your existing database, saved in the previous NGEdition version.

Select all your existing databases

Click Add



Your databases should appear now appear in NGEditionG4 (Destination).



Select which network interface you want to import the databases to. The NetGuardian G4 has two of them to choose from.

Click Import to finish.

- ❑ Load the database into the new NetGuardian G4/G5.
- ❑ Verify that all the used serial ports are still fully functional on the new NetGuardian G4/G5.