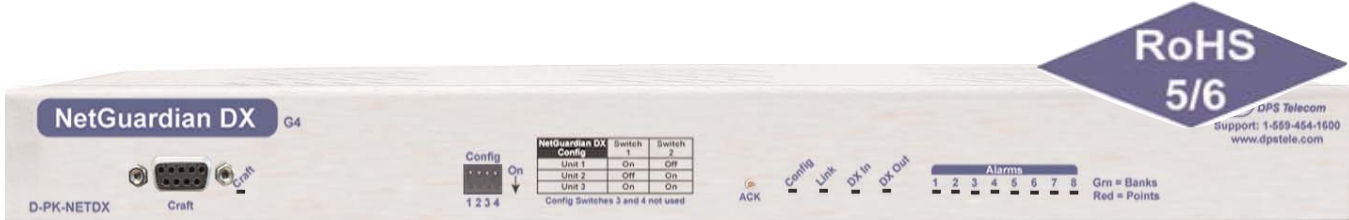


NetGuardian DX G4

Expand Your Alarm Point Coverage



The NetGuardian Discrete Expansion unit with integrated hub provides an additional 48 alarm points per unit (3 max.), an 8-port 10BaseT hub, and 8 controls to extend capacity of the NetGuardian 832A

Summary of Benefits

- **Integrated 8-port 10BaseT hub eliminates the costs and rack space associated with installing a separate hub**
- **Provides an economic way to incrementally increase alarm capacity as your site grows**
- **Convenient alarm viewing and configuration via the NetGuardian's Web Browser**
- **Great for sites with higher alarm point requirements**
- **Easy daisy-chaining between units**
- **Increases reliability with dual power-feed inputs**

Overview

The NetGuardian Expansion unit with integrated hub is the ideal solution for sites with higher alarm point requirements. The unit complements the already powerful NetGuardian and provides 48 discrete alarms per unit with capacity for up to 3 units per NetGuardian (176 alarm point total), an 8-port 10BaseT hub, and 8 additional controls.

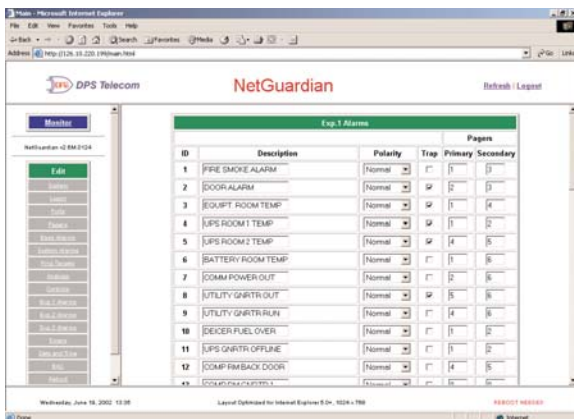
The single connection point between the NetGuardian and the Expansion unit makes setup a snap and it mounts easily in a 19" or 23" rack. The Expansion unit's alarm information can be viewed and configured via the NetGuardian's Web Browser or TTY interface.

The reliability, versatility, and capacity of the NetGuardian family of RTUs makes them the standard for network monitoring.

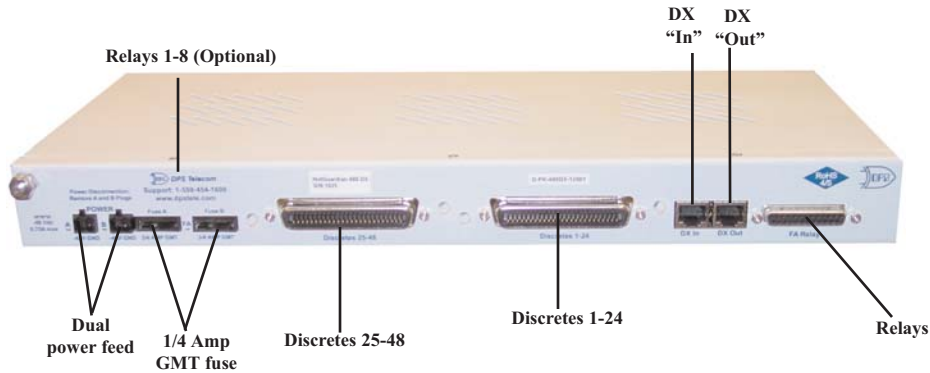
Unit	Capacity
Base NG	32
1 DX	80
2 DX	128
3 DX	176



Up to 3 NetGuardian Expansion units can be connected to the base NetGuardian.



View and configure the NetGuardian Expansion alarms from the NetGuardian's Web Browser.



The back panel offers easy connectorization for power feeds, discrete alarms, relays, and 10BaseT hub.

Specifications

Dimensions: 17" W x 8.625" L x 1.75" H

Weight: 3 lbs. 15 oz. (1.8 kg)

Mounting: 19" or 23" rack

Power Input: -48VDC (-40 to -70VDC), -24VDC or Wide range (-18 to -70VDC)

Current draw: 140mA (dual power feeds *standard*)

Interfaces: 2 DB9 DCE RS232 port, 1 DB25 port

Protocols: DCPX

Hub: Eight 10BaseT ports with Uplink jack

Alarm Point Inputs: 48

Control Outputs (Optional): Relay contacts, 8 each

Form A (N/O, N/C selectable)

Max. Voltage = 60 VDC/120 VAC

Max. Current = 1 Amp, AC/DC

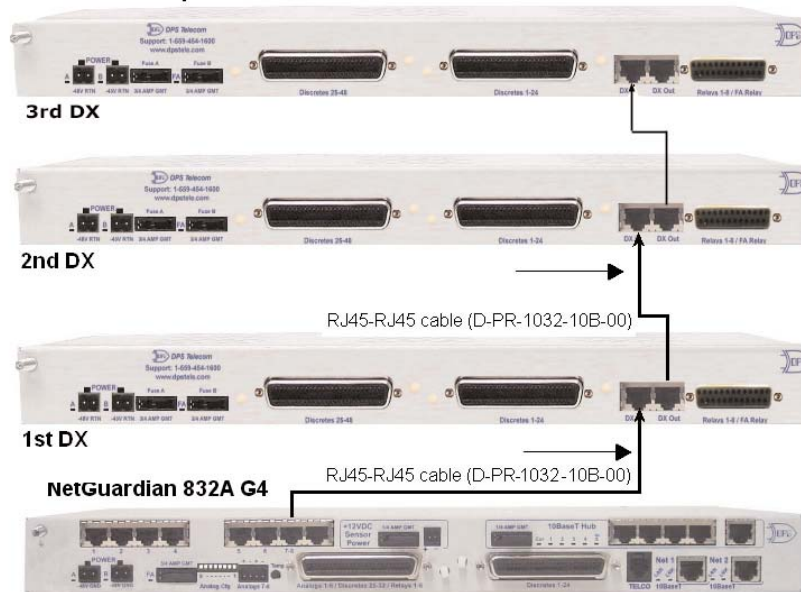
Fuse: 1/4 Amp GMT

Operating Temperature: 0° to 60°C (32° to 140°F)

Extended Opt: -40°C to +70°C (-40° to 158°F)

Operating Humidity: 0% to 95% non-condensing

NetGuardian Expansion Units



Call your DPS Sales Representative today at 1-800-622-3314

The Net Guardian Expansion with integrated hub and all DPS products are backed by a 2-year hardware warranty.

DPS also offers a 30-day No Risk Guaranty that states,

"If you buy our equipment and are not satisfied for any reason during the first 30 days, simply return it."

Visit our website at www.dpstele.com

4955 East Yale Avenue, Fresno, California 93727 • 800-622-3314 • Fax 559-454-1688