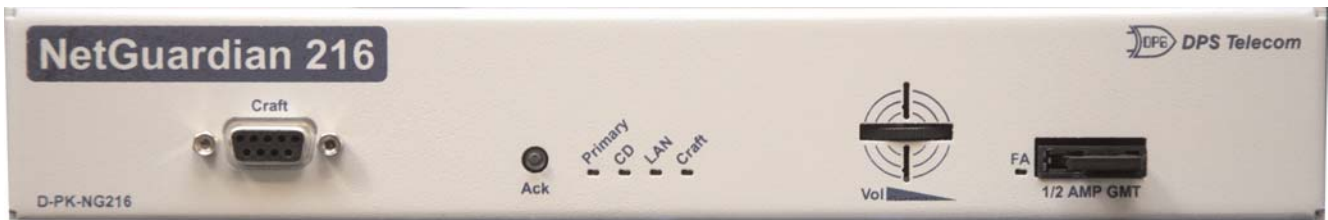


NetGuardian 216

The Ideal Remote For Small Sites



The NEBS-compliant NetGuardian 216 provides advanced network reliability management in a compact, affordable format, utilizing your existing IP network for data transport.

Features

- **Finally, a cost-effective way to monitor your small but critical sites**
- **The ideal monitoring solution for small sites — advanced and effective**
- **The economical way to add alarm visibility to all your sites**
- **Goes wherever your LAN goes**
- **NEBS Level 3 compliant**
- **16 discrete alarm inputs, 2 analog alarm inputs, and 2 control relay outputs — provides complete coverage for your smaller remote sites**
- **Telnet through to on-site communications equipment via craft port**
- **Supports SNMP, and DCP(f/x)**
- **Audible alarm alerts with volume control and cut off switch**
- **FREE downloadable firmware updates**
- **Two-year warranty**
- **30-DAY NO-RISK MONEY-BACK GUARANTEE**

Overview

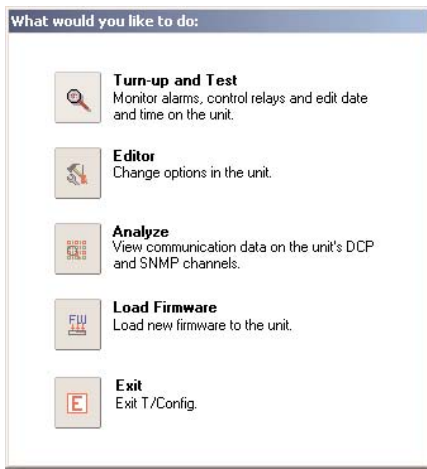
As the most compact member of the NetGuardian family, the NetGuardian 216 offers an easy, cost-effective way to monitor your small sites.

The NetGuardian 216 comes with 16 discrete alarm inputs, 2 analog alarm inputs, and 2 control relay outputs. The discrete alarms can be used for items such as door alarms, equipment alarms and other ON/OFF events. The analog alarms are used for measuring such critical events as temperature and voltage. Each of the alarms can be assigned qualification times so that transient and nuisance alarms can be filtered out.

The controls are a convenient and time efficient way of remotely switching equipment in the field via the NetGuardian's internal relays.

The NetGuardian 216 provides complete coverage and control of your small remote sites. It can report alarms via SNMP, DCP, DCPf, or DCPx over either UDP or TCP and can be used with your DPS master station or an SNMP manager.

The reach-through serial port on the NG216 provides you the ability to access a remote serial device via LAN using a terminal server. The NetGuardian also features a real-time clock. Each time an alarm occurs, a time/date stamp will be included in the SNMP trap. The NetGuardian 216 clock will even remember the current date and time settings during power failures.



Included Windows software gives full control of configuration and monitoring options.



The NetGuardian 216T features easy LAN connectivity for alarms, controls, and reach-through access.

Specifications

Protocols:	SNMP DCP, DCPF, DCPX	Audible Interface:	Speaker with volume control and cut-off switch
Discrete Point Inputs:	16 (reversible)	Dimensions:	1.720" H x 10.489" W x 6.636"D
Analog Inputs:	2	Mounting:	19" or 23" rack or wall mount
Analog Thresholds:	4 per analog	Power Input Options:	-48 VDC (-40 to -70 VDC) single or dual power input OR 9 VDC from 110 VAC wall transformer
Analog Input Range:	-90 to 90 VDC		
Control Outputs:	2	Current draw:	50 mA
Maximum Voltage:	60 VDC/120 VAC	Fuse:	0.5Amp GMT
Maximum Current:	1 Amp AC/DC	Operating Temperature:	32° to 140°F (0° to 60°C)
Interfaces:	One 50-pin connector 1 RJ45 Ethernet jack 1 4-pin connector 1 DB9 craft port 1 RS 232 polling port	Operating Humidity:	0% to 95% noncondensing
Visual Display:	9 LEDs	Configuration and Monitoring Utility Included	
		Downloadable Firmware	
		NEBS Level 3 Compliant	

Ordering Options

Wall mount unit
Wire wrap terminations

Dual -48 VDC power inputs
110 VAC wall transformer

 **Call 1-800-622-3314 for Pricing**

All units are custom built to order. Allow 2-4 weeks for delivery.

All DPS Telecom products are backed by our 30-Day, No-Risk Guarantee:

"If you buy our equipment and are not satisfied for any reason during the first 30 days, simply return it for a full refund."

Visit our website at www.dpstelecom.com

4955 East Yale Avenue, Fresno, California 93727 • 800-622-3314 • Fax 559-454-1688