

AlphaMax 82A/82S and UPS with T/AlphaW Software

Features

- Pages you when critical events occur
- Eight alarm inputs, two relay outputs
- Reports to Alpha and Numeric Pagers, ASCII Terminals and T/Mon Masters
- DTMF phone control
- Configuration software runs under Windows 95 to Windows XP
- Derived controls automatically operate relays
- AC or DC Powered, 3 hour safety net with UPS
- Reach through craft port to another device

Overview

DPS' AlphaMax 82A, teamed with your local pager service, will let you know when you have an important event occurring at some isolated, unmanned location. The AlphaMax can be supplied with a "UPS" Connector Block with Battery Backup to simplify installation and provide continued operation during power outages.

The AlphaMax can detect any event that can be translated into an electrical signal, such as that coming from a microswitch or photo cell. Door openings and equipment failures are typical events that it can report on your pager. In addition, you can contact the AlphaMax from any tone dialing telephone and, by password identification, activate remote control devices like door locks or security lights. AlphaMax has broad applications in many areas, including:

Telecommunications -The AlphaMax is just right for cell sites, small offices and remote huts for monitoring tower lights and other critical equipment. In addition to its pager reporting, telecom locations may forward selected alarm points to a central monitoring system. AlphaMax reports with TRIP protocol or ASCII messages.

Transportation AlphaMax is ideal for monitoring crossing gates and other safety devices and reporting problems via pager or cellular phone.

Refrigeration -AlphaMax monitors freezer doors, temperature, compressor operation and power lines, warning you of problems, before they become losses.

Manufacturing AlphaMax monitors processes and equipment status on-line, paging your maintenance and supervisory personnel throughout a facility, 24 hours a day.

Security -AlphaMax can pinpoint entry violations to a specific door or window. Security personnel are notified of activity even when they are on another part of the property.

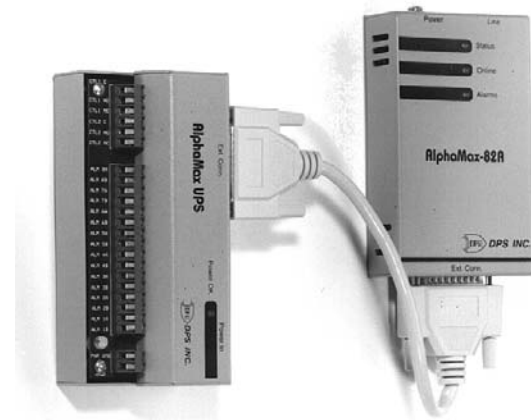


Fig. 1 - UPS Connector Block With the AlphaMax Remote Provides Security and Simple Installation

Agriculture -An AlphaMax in a barn or other out-building can notify you of an unauthorized entry, temperature extreme, fire, low water pressure, pump operation, etc. With AlphaMax's remote control capability, you can operate door locks, security lights and pumps. With wide-area paging service, you can know the condition of your ranch or farm no matter where you are.

Configuration Software Configuring AlphaMax from your PC is easy with T/Alpha for Windows™ (T/AlphaW) software, included at no extra charge). T/AlphaW software also monitors alarms and operates control relays.

ASCII Port Access -The AlphaMax 82S has all the features outlined above, plus the ability to remotely access the craft port of a nearby device. This allows you to download instructions and obtain status information from a PABX, server, radio, etc.

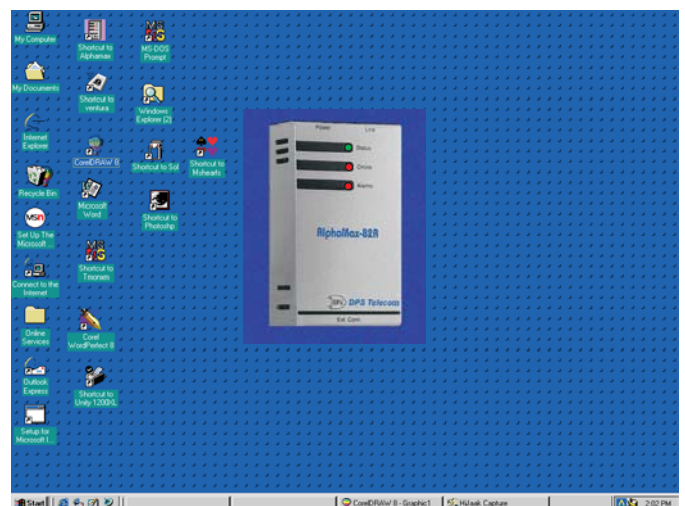


Fig. 1a - T/AlphaW runs on your Windows Desktop.

AlphaMax Specifications

Dimensions -	5.3" (L) x 3.1" (W) x 1.25" (D)
Mounting -	The keyhole pattern on the back of the AlphaMax allows mounting on a wall, frame or rack.
Power Input -	Power input is +9 to +27 VDC, 133 mA @ 9VDC (1.2 Watts). mODEL 247 is 48 VDC. Use the AC adapter provided with the AlphaMax or power by DC input. Battery Backup available on an external "UPS" connector block.
Heat Dissipation -	4.1 BTU, maximum
Interfaces -	1 DB25, 1 RJ12
Modem -	212 "AT" Type 300/1200 baud DTMF/Pulse dial internal modem with DTMF receiver.
Protocols -	T/Mon Remote Interface Protocol (TRIP) TAP Protocol (for Alpha pagers) ASCII
Operating Temperature Range -	0° to +60° Celsius (32° to 140° F) for -00 option -30° to +70° Celsius (-22° to +150° F) for -20 option
Humidity -	0% to 95% non-condensing
Shipping Weight -	3 lbs.
Control Output Relay Contacts -	2 each, form C Maximum switching voltage = 60 VDC / 120 VAC Maximum switching current = 1 Amp, AC or DC
Connectors -	Alarms and controls connect via a DB25 female connector, J1*. Power connects via a 3.5 mm mono jack*. Telephone line connects via an RJ-12 type modular connector. *Optional screw lug terminals with external connector block.
Alarm Point Inputs -	Maximum 50 volts on inputs.
Craft Port -	AlphaMax 82S only. Uses some pins of the DB 25 connector. RS232, 1200 Baud.
Configuration Software -	T/AlphaW. Requires Windows 95, 98, NT, ME, 2000, or XP.

UPS Connector Block Specifications (UPS Connector Block works with all AlphaMax 82A models)

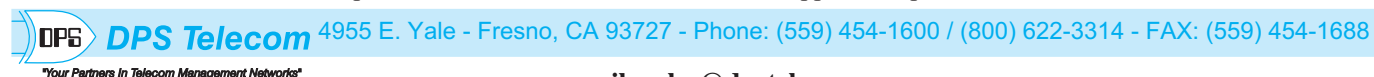
Size:	6" H X 2.75" W X 2" D
Shipping Weight:	5 lb.
Fuse value:	250 mA (1/4 Amp), Type GMA (5 X 20 mm)
Connectors:	DB25 for connections to AlphaMax Screw-on jack for AC adapter power Screw lug Terminals posts for alarm and control points
Battery:	GP Silvarcharge 8.4 volt, 150 ma/hr, (Included) - capacity of 2, 1 equipped
Battery operating time:	3 hours from full charge, no relays operated
Battery recharge time:	16 hours, from a full discharge
Battery Life Expectancy:	500 to 1000 recharge cycles
Mounting:	Mounts on a wall, frame or rack. Two keyhole-shaped holes spaced 1.75" apart.

AlphaMax part numbers:

D-PC-245-22B-00	Single-ended inputs, pager, alarm center and ASCII reporting.
D-PC-245-22B-20	Same as D-PC-245-10C-00, with extended temperature range.
D-PC-246-22B-00	Bi-polar inputs, pager, alarm center and ASCII reporting.
D-PC-246-22B-20	Same as D-PC-246-10C-00, with extended temperature range.
D-PC-247-22B-00	AlphaMax 82S. Same as model 245, with serial port "reach through," -48 VDC, 1200 Baud modem.
D-PC-247-22B-02	As above, with 2400 Baud modem.

AlphaMax accessories:

D-RK-140-10A-00	19" Rack Mount Panel. Mounts 2 AlphaMaxes and Wire Wrap Block.
D-RK-150-10A-00	23" Rack Mount Panel. Mounts 2 AlphaMaxes and Wire Wrap Block.
D-PC-254-10A-11	"UPS" Single Connector Block, Screw Lug terminals, e/w 1 Battery.
D-PC-254-10A-12	"UPS" Single Connector Block, Screw Lug terminals, e/w 2 Batteries.
D-PC-260-10A-00	Wire Wrap Block, fuses and DB25 connectors to support 2 AlphaMaxes



e-mail: sales@dpstele.com

Visit our Web site at <http://www.dpstele.com>